

NBHA RESOLUTION 2019 – 8/21 # 23

Resolution Approving and Adopting a revised Admissions and Continued Occupancy Policy (ACOP) for the Housing Authority of the City of New Brunswick

WHEREAS, the Housing Authority of the City of New Brunswick (including any successors or assigns, the “Housing Authority”), was duly created as an agency and instrumentality of the municipality of the State (the “Local Unit”) in which such Housing Authority is located, and has been continued as a housing authority pursuant to and in accordance with the provisions of the Local Redevelopment and Housing Law, constituting Chapter 79 of the Laws of 1992 of the State, and the acts amendatory thereof and supplemental thereto (*N.J.S.A. 40A:12A-1 et seq.*) (the “Local Housing Law”);

WHEREAS, HUD has issued various notice and that require the ACOP to be revised;
and

WHEREAS, the Housing Authority has worked with the management consultant to create a summary sheet that details the revisions to the policy and has distributed the entire policy to all Board members for review and consideration.

NOW, THEREFORE, BE IT RESOLVED by the Board of Commissioners of the Housing Authority of the City of New Brunswick hereby approves and adopts the revised Admissions and Continued Occupancy Policy (ACOP) effective immediately.

Passed on this 21st day of August, 2019 (See attached Vote Box)



Chairperson



JOHN CLARKE, Executive Director
And Secretary to the Board

NBHA RESOLUTION 2019 – 8/21 # 23

**Resolution Approving and Adopting a revised Admissions and Continued
Occupancy Policy (ACOP) for the Housing Authority of the City of New
Brunswick**

COMMISSIONERS	MOVES	SECONDS	AYES	NAYS	ABSTAIN	ABSENT
VACANT						
JONES	✓		✓			
GIORGIANNI			✓			
WOLDE			✓			
DUNLAP			✓			
MEDINA- HERNANDEZ		✓	✓			
CALDWELL			✓			

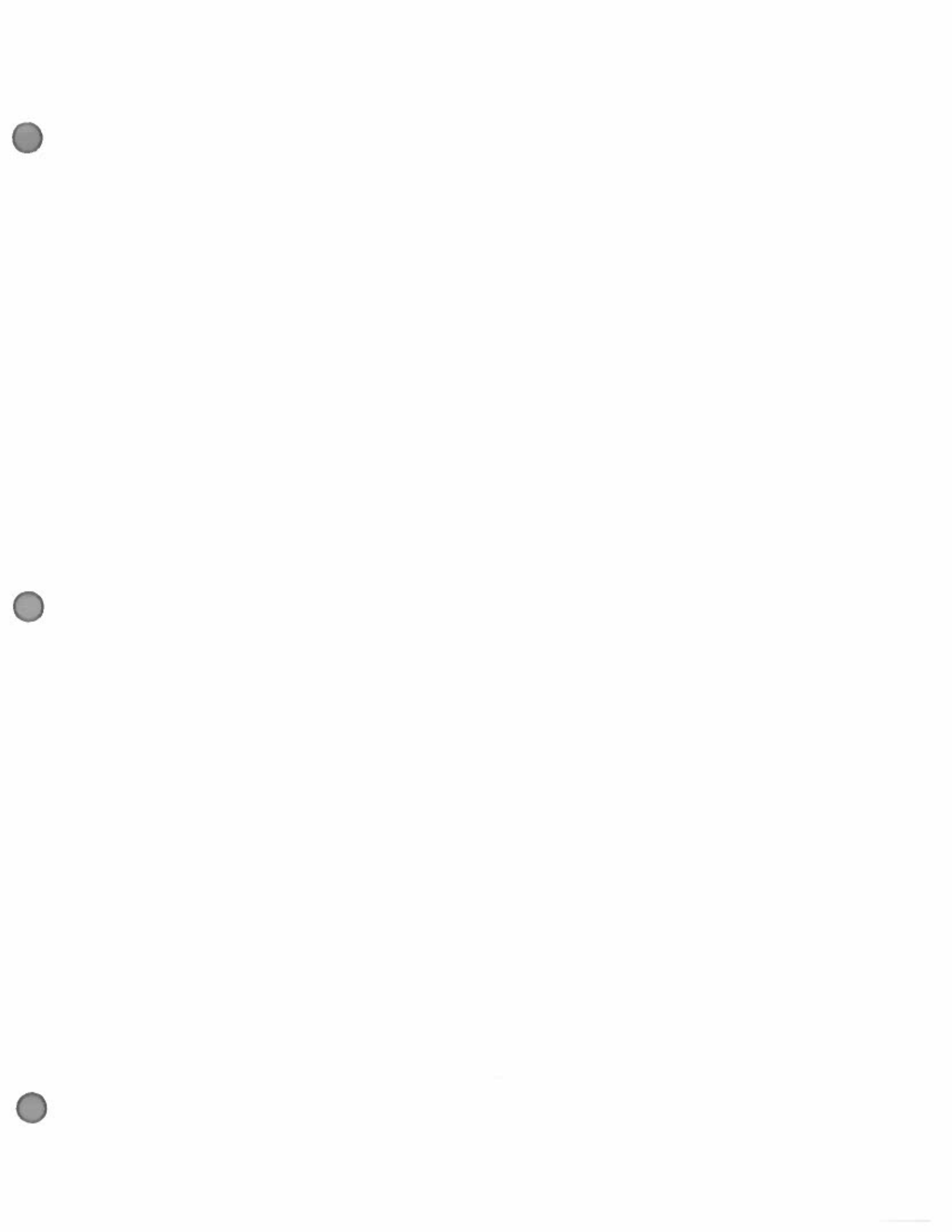
NEW BRUNSWICK HOUSING AUTHORITY
ADMISSIONS AND CONTINUED OCCUPANCY POLICY
FOR THE
PUBLIC HOUSING PROGRAM

January 2017

Revision Date	
June 1, 2019	

Approved by the PHA Board of Commissioners:

Submitted to HUD:



Copyright 2016 by Nan McKay & Associates, Inc.

All rights reserved

Permission to reprint granted only to the Public Housing Authority that has purchased this plan from Nan McKay & Associates, Inc. This document may not be reprinted or distributed to any other person or entity other than the purchasing agency without the express written permission of Nan McKay & Associates, Inc.

Introduction

ABOUT THE MODEL ACOP

HOW TO USE THE MODEL ACOP

The model ACOP includes recommended language for each area in which the PHA has discretion or flexibility to adopt its own policies. To make the editing process easier, the model ACOP contains only **one version** of each policy – generally HUD’s safe harbor policy or the policy that seems to be common to most PHAs. *This means that if the model policy language works for your PHA, no cutting and pasting is required.*

HUD regulations and other requirements are described in detail in the model ACOP with appropriate citations. They are also summarized in the policy guide as needed to assist in making decisions.

The Policy Guide and Instructions

The policy guide is a decision-making tool for PHA policy makers. You can use the guide as a checklist for evaluating your compliance with HUD requirements and for making decisions about local policies. PHA decision points are identified throughout this document with this symbol:



The policy guide provides recommended language and policy options and explains why the recommended language is used in the model ACOP.

- If you decide to adopt an alternative policy, you may edit or delete the NMA-provided language in the model ACOP, cut and paste another option from the policy guide, or develop and type in your own wording.

Before starting work on the revision, print out the Acrobat PDF files of the model ACOP pages and policy guide for each chapter. Read through the model policy and review the decision points in the policy guide to determine if you want to make any changes to the model ACOP. After you have edited the model ACOP, print out the revised chapter to update your hard copy and, and edit the table of contents (TOC) file if necessary to update the TOC for your ACOP.

Working with the Computer Files

On your hard drive or network drive, set up a *subdirectory* (such as ACOPrev) for the ACOP revision in your ACOP or other directory in which you keep your documents. Copy the files for the policy document and the guide chapters from the CD-ROM into that directory and use them as your working files. Store your CD-ROM in a safe place.

ABOUT THE MODEL ACOP AND THE PUBLIC HOUSING LEASE

PHA policy must be consistent with the public housing lease and any policy documents provided to tenants, and the lease and policy documents must comply with federal and state law.

The model ACOP contains policies that reflect the terms of your public housing lease. Policies on a particular topic may be included in the public housing lease, or may be a separate document incorporated in the lease by reference, such as a pet policy or transfer policy.

Because of variations in state and local landlord-tenant law, and because HUD affords PHAs wide discretion in some areas, a broad range of policies could be acceptable. Only a few of these compliant policies can be listed in the model ACOP.

If you are assured that your current board-approved public housing lease or separate policy document is up-to-date and is compliant with HUD requirements and with federal, state, and local laws, then it is neither necessary nor advisable to revise the terms of your lease or policy document to match default policies in the model ACOP. Instead, you should edit the model ACOP to match the terms of your existing public housing lease.

REFERENCES CITED IN THE MODEL ACOP

Authority for PHA policies is derived from many sources. Primary among these sources are regulations and guidance issued by HUD. State law also directs PHA policy. State law must be followed where such law exists and does not conflict with federal regulations. In the absence of legal requirements or HUD guidance, industry practice may lead to PHA policy. Finally, the public housing lease will affect PHA policy and therefore must be consistent with federal and state laws and regulations.

HUD

HUD provides the primary source of PHA policy through federal regulations, HUD Notices and handbooks. Compliance with federal regulations, current HUD Notices and HUD handbooks is mandatory.

HUD provides nonmandatory guidance to PHAs through HUD published guidebooks. Expired HUD Notices and handbooks also provide guidance for PHA policy. Following HUD guidance is optional, as long as PHA policies comply with federal law, federal regulations and mandatory policy. Because HUD has already determined that the guidance it provides is consistent with mandatory policies, PHA reliance on HUD guidance provides the PHA with a “safe harbor.”

Content contained on the HUD website can provide further clarification of HUD policies. For example, FAQs on the HUD website can provide direction on the application of federal regulations to a specific pattern.

State Law

Where there is no mandatory federal guidance, PHAs must comply with state law, if it exists. Where state law is more restrictive than federal law, but does not conflict with it, the PHA should follow the state law.

Industry Practice

Where no law or HUD authority exists on a particular subject, industry practice may support PHA policy. An industry practice is a way of doing things that is followed by most housing authorities.

RESOURCES CITED IN THE MODEL ACOP

The model ACOP cites several documents. Where a document or resource is cited frequently, it may be abbreviated. Where it is cited only once or twice, the model ACOP may contain the entire name of the document or resource. Following is a key to abbreviations used for various sources that are frequently cited in the ACOP, and a list of references and document locations that are referenced in the model ACOP or that may be helpful to you.

Abbreviations

Throughout the model ACOP, abbreviations are used to designate certain documents in citations. The following is a table of abbreviations of documents cited by the model ACOP.

Abbreviation	Document
CFR	Code of Federal Regulations
HCV GB	Housing Choice Voucher Program Guidebook (7420.10G), April 2001.
HUD-50058 IB	HUD-50058 Instruction Booklet
PH OCC GB	Public Housing Occupancy Guidebook, June 2003
RHIIP FAQs	Rental Housing Integrity Improvement Program (RHIIP) Frequently Asked Questions
VG	Verification Guidance, March 2004 (attachment to PIH Notice 2004-1)

Resources and Where to Find Them

Following is a list of resources helpful to the PHA or referenced in the model ACOP, and the online location of each.

Document and Location
Code of Federal Regulations http://www.ecfr.gov
Earned Income Disregard FAQs http://www.hud.gov/offices/pih/phr/about/ao_faq_eid.cfm
Enterprise Income Verification (EIV) System PHA Security Procedures, Version 1.2, issued January 2005 http://www.hud.gov/offices/pih/programs/ph/rhiip/docs/eivsecguidepha.pdf
Executive Order 11063 http://www.hud.gov/offices/fheo/FHLaws/EXO11063.cfm
Federal Register http://www.gpo.gov/fdsys/search/getfrtoc.action
General Income and Rent Determination FAQs http://www.hud.gov/offices/pih/programs/ph/rhiip/faq_gird.cfm
Housing Choice Voucher Program Guidebook (7420.10G), April 2001 http://www.hud.gov/offices/pih/programs/hcv/forms/guidebook.cfm
HUD-50058 Instruction Booklet http://portal.hud.gov/sites/documents/FORM50058INSTRUCTIONBOOKLET.PDF
Joint Statement of the Department of Housing and Urban Development and the Department of Justice, issued May 17, 2004 http://www.hud.gov/offices/fheo/library/huddojstatement.pdf
Final Guidance to Federal Financial Assistance Recipients Regarding Title VI Prohibition Against National Origin Discrimination Affecting Limited English Proficient Persons, published January 22, 2007 http://www.hud.gov/offices/fheo/promotingfh/FederalRegistepublishedguidance.pdf

<p>Notice PIH 2007-27 (HA), Disallowed Costs and Sanctions Resulting from On-Site Monitoring Reviews http://www.hud.gov/offices/pih/publications/notices/07/pih2007-27.pdf</p>
<p>Notice PIH 2018-24, Verification of Social Security Numbers (SSNs) and Supplemental Security Income (SSI) Benefits; and Effective Use of the Enterprise Income Verification (EIV) System's Identity Verification Report http://portal.hud.gov/huddoc/pih2012-10.pdf</p>
<p>Notice PIH 2010-19, Administrative Guidance for Effective and Mandated Use of the Enterprise Income Verification (EIV) System http://www.hud.gov/offices/pih/publications/notices/10/pih2010-19.pdf</p>
<p>Notice PIH 2010-26 (HA), Nondiscrimination and Accessibility Notice http://www.hud.gov/offices/pih/publications/notices/10/pih2010-26.pdf</p>
<p>OMB Circular A-133 http://www.whitehouse.gov/omb/circulars/a133_compliance_supplement_2010</p>
<p>Public Housing Occupancy Guidebook, June 2003 http://www.hud.gov/offices/pih/programs/ph/rhiip/phguidebook.cfm</p>
<p>Rental Housing Integrity Improvement Program (RHIIP) Frequently Asked Questions http://www.hud.gov/offices/pih/programs/ph/rhiip/faq.cfm</p>
<p>VAWA Reauthorization Act of 2013 http://www.gpo.gov/fdsys/pkg/FR-2013-08-06/pdf/2013-18920.pdf</p>
<p>Verification FAQs http://www.hud.gov/offices/pih/programs/ph/rhiip/faq_verif.cfm</p>
<p>Verification Guidance, March 2004 (attachment to Notice PIH 2004-1) http://www.hud.gov/offices/pih/publications/notices/04/verifguidance.pdf</p>

The HUD Web site is <http://portal.hud.gov/hudportal/HUD>.

Guidebooks, handbooks, and other HUD resources may be found at the HUDClips Web site:
http://portal.hud.gov/hudportal/HUD?src=/program_offices/administration/hudclips.

Introduction
ABOUT THE MODEL ACOP

HOW TO USE THE MODEL ACOP	Intro-i
ABOUT THE MODEL ACOP AND THE PUBLIC HOUSING LEASE	Intro-ii
REFERENCES CITED IN THE MODEL ACOP	Intro-ii
RESOURCES CITED IN THE MODEL ACOP	Intro-iii

Chapter 1
OVERVIEW OF THE PROGRAM AND PLAN

INTRODUCTION	1-1
--------------------	-----

PART I: THE PHA

I.A. OVERVIEW	1-1
I.B. ORGANIZATION AND STRUCTURE OF THE PHA	1-2
I.C. PHA MISSION	1-3
I.D. THE PHA'S COMMITMENT TO ETHICS AND SERVICE	1-4

PART II: THE PUBLIC HOUSING PROGRAM

II.A. OVERVIEW AND HISTORY OF THE PROGRAM	1-5
II.B. PUBLIC HOUSING PROGRAM BASICS	1-6
II.C. PUBLIC HOUSING PARTNERSHIPS	1-6
II.D. APPLICABLE REGULATIONS	1-10

PART III: THE ADMISSIONS AND CONTINUED OCCUPANCY POLICIES

III.A. OVERVIEW AND PURPOSE OF THE POLICY	1-11
III.B. CONTENTS OF THE POLICY	1-11
III.C. UPDATING AND REVISING THE POLICY	1-12

Chapter 2
FAIR HOUSING AND EQUAL OPPORTUNITY

INTRODUCTION 2-1

PART I: NONDISCRIMINATION

I.A. OVERVIEW 2-3
I.B. NONDISCRIMINATION..... 2-4

PART II: POLICIES RELATED TO PERSONS WITH DISABILITIES

II.A. OVERVIEW 2-7
II.B. DEFINITION OF REASONABLE ACCOMMODATION 2-8
II.C. REQUEST FOR AN ACCOMMODATION..... 2-9
II.D. VERIFICATION OF DISABILITY 2-10
II.E. APPROVAL/DENIAL OF A REQUESTED ACCOMMODATION..... 2-11
II.F. PROGRAM ACCESSIBILITY FOR PERSONS WITH HEARING OR
VISION IMPAIRMENTS 2-12
II.G. PHYSICAL ACCESSIBILITY 2-13
II.H. DENIAL OR TERMINATION OF ASSISTANCE 2-14

**PART III: IMPROVING ACCESS TO SERVICES FOR PERSONS WITH
LIMITED ENGLISH PROFICIENCY (LEP)**

III.A. OVERVIEW 2-15
III.B. ORAL INTERPRETATION..... 2-16
III.C. WRITTEN TRANSLATION..... 2-16
III.D. IMPLEMENTATION PLAN 2-17

EXHIBITS

2-1: DEFINITION OF A PERSON WITH A DISABILITY UNDER FEDERAL
CIVIL RIGHTS LAWS 2-19

Chapter 3
ELIGIBILITY

INTRODUCTION 3-1

PART I: DEFINITIONS OF FAMILY AND HOUSEHOLD MEMBERS

I.A. OVERVIEW 3-3
I.B. FAMILY AND HOUSEHOLD 3-3
I.C. FAMILY BREAK-UP AND REMAINING MEMBER OF TENANT FAMILY 3-4
I.D. HEAD OF HOUSEHOLD 3-5
I.E. SPOUSE AND OTHER ADULT 3-5
I.F. DEPENDENT 3-6
I.G. FULL-TIME STUDENT 3-6
I.H. ELDERLY AND NEAR-ELDERLY PERSONS, AND ELDERLY FAMILY 3-7
I.I. PERSONS WITH DISABILITIES AND DISABLED FAMILY 3-7
I.J. GUESTS 3-8
I.K. FOSTER CHILDREN AND FOSTER ADULTS 3-9
I.L. ABSENT FAMILY MEMBERS 3-10
I.M. LIVE-IN AIDE 3-12

PART II: BASIC ELIGIBILITY CRITERIA

II.A. INCOME ELIGIBILITY AND TARGETING 3-13
II.B. CITIZENSHIP OR ELIGIBLE IMMIGRATION STATUS 3-15
II.C. SOCIAL SECURITY NUMBERS 3-17
II.D. FAMILY CONSENT TO RELEASE OF INFORMATION 3-18

PART III: DENIAL OF ADMISSION

III.A. OVERVIEW 3-19
III.B. REQUIRED DENIAL OF ADMISSION 3-19
III.C. OTHER PERMITTED REASONS FOR DENIAL OF ADMISSION 3-21
III.D. SCREENING 3-23
III.E. CRITERIA FOR DECIDING TO DENY ADMISSION 3-27
III.F. PROHIBITION AGAINST DENIAL OF ASSISTANCE TO VICTIMS
OF DOMESTIC VIOLENCE, DATING VIOLENCE, SEXUAL ASSAULT,
OR STALKING 3-30
III.G. NOTICE OF ELIGIBILITY OR DENIAL 3-31

EXHIBITS

3-1: DETAILED DEFINITIONS RELATED TO DISABILITIES 3-32

Chapter 4
APPLICATIONS, WAITING LIST AND TENANT SELECTION

INTRODUCTION 4-1

PART I: THE APPLICATION PROCESS

I.A. OVERVIEW 4-3
I.B. APPLYING FOR ASSISTANCE..... 4-3
I.C. ACCESSIBILITY OF THE APPLICATION PROCESS..... 4-4
I.D. PLACEMENT ON THE WAITING LIST 4-5

PART II: MANAGING THE WAITING LIST

II.A. OVERVIEW 4-8
II.B. ORGANIZATION OF THE WAITING LIST 4-8
II.C. OPENING AND CLOSING THE WAITING LIST 4-10
II.D. FAMILY OUTREACH 4-11
II.E. REPORTING CHANGES IN FAMILY CIRCUMSTANCES 4-12
II.F. UPDATING THE WAITING LIST 4-13

PART III: TENANT SELECTION

III.A. OVERVIEW 4-16
III.B. SELECTION METHOD..... 4-17
III.C. NOTIFICATION OF SELECTION 4-20
III.D. THE APPLICATION INTERVIEW 4-21
III.E. FINAL ELIGIBILITY DETERMINATION 4-23

Chapter 5
OCCUPANCY STANDARDS AND UNIT OFFERS

INTRODUCTION 5-1

PART I: OCCUPANCY STANDARDS

I.A. OVERVIEW 5-1
I.B. DETERMINING UNIT SIZE..... 5-2
I.C. EXCEPTIONS TO OCCUPANCY STANDARDS 5-3

PART II: UNIT OFFERS

II.A. OVERVIEW 5-5
II.B. NUMBER OF OFFERS..... 5-5
II.C. TIME LIMIT FOR UNIT OFFER ACCEPTANCE OR REFUSAL 5-5
II.D. REFUSALS OF UNIT OFFERS 5-5
II.E. ACCESSIBLE UNITS..... 5-8
II.F. DESIGNATED HOUSING 5-8

Chapter 6
INCOME AND RENT DETERMINATIONS

INTRODUCTION 6-1

PART I: ANNUAL INCOME

I.A. OVERVIEW 6-3
I.B. HOUSEHOLD COMPOSITION AND INCOME 6-4
I.C. ANTICIPATING ANNUAL INCOME..... 6-7
I.D. EARNED INCOME..... 6-9
I.E. EARNED INCOME DISALLOWANCE..... 6-13
I.F. BUSINESS INCOME..... 6-16
I.G. ASSETS 6-18
I.H. PERIODIC PAYMENTS 6-26
I.I. PAYMENTS IN LIEU OF EARNINGS 6-28
I.J. WELFARE ASSISTANCE 6-29
I.K. PERIODIC AND DETERMINABLE ALLOWANCES 6-30
I.L. ADDITIONAL EXCLUSIONS FROM ANNUAL INCOME..... 6-31

PART II: ADJUSTED INCOME

II.A. INTRODUCTION 6-34
II.B. DEPENDENT DEDUCTION..... 6-35
II.C. ELDERLY OR DISABLED FAMILY DEDUCTION 6-35
II.D. MEDICAL EXPENSES DEDUCTION 6-36
II.E. DISABILITY ASSISTANCE EXPENSES DEDUCTION..... 6-38
II.F. CHILD CARE EXPENSE DEDUCTION..... 6-41
II.G. PERMISSIVE DEDUCTIONS..... 6-45

PART III: CALCULATING RENT

III.A. OVERVIEW OF INCOME-BASED RENT CALCULATIONS..... 6-46
III.B. FINANCIAL HARDSHIPS AFFECTING MINIMUM RENT 6-49
III.C. UTILITY ALLOWANCES 6-50
III.D. PRORATED RENT FOR MIXED FAMILIES..... 6-50
III.E. FLAT RENTS AND FAMILY CHOICE IN RENTS 6-51

EXHIBITS

6-1: ANNUAL INCOME INCLUSIONS 6-55
6-2: ANNUAL INCOME EXCLUSIONS 6-57
6-3: TREATMENT OF FAMILY ASSETS 6-59
6-4: EARNED INCOME DISALLOWANCE..... 6-61
6-5: THE EFFECT OF WELFARE BENEFIT REDUCTION..... 6-63

**Chapter 7
VERIFICATION**

INTRODUCTION 7-1

PART I: GENERAL VERIFICATION REQUIREMENTS

I.A. FAMILY CONSENT TO RELEASE OF INFORMATION..... 7-1
I.B. OVERVIEW OF VERIFICATION REQUIREMENTS 7-2
I.C. UP-FRONT INCOME VERIFICATION (UIV) 7-4
I.D. THIRD-PARTY WRITTEN AND ORAL VERIFICATION 7-6
I.E. SELF-CERTIFICATION..... 7-9

PART II: VERIFYING FAMILY INFORMATION

II.A. VERIFICATION OF LEGAL IDENTITY..... 7-11
II.B. SOCIAL SECURITY NUMBERS 7-12
II.C. DOCUMENTATION OF AGE 7-13
II.D. FAMILY RELATIONSHIPS 7-14
II.E. VERIFICATION OF STUDENT STATUS 7-15
II.F. DOCUMENTATION OF DISABILITY 7-16
II.G. CITIZENSHIP OR ELIGIBLE IMMIGRATION STATUS 7-17
II.H. VERIFICATION OF PREFERENCE STATUS 7-18

PART III: VERIFYING INCOME AND ASSETS

III.A. EARNED INCOME..... 7-19
III.B. BUSINESS AND SELF EMPLOYMENT INCOME 7-19
III.C. PERIODIC PAYMENTS AND PAYMENTS IN LIEU OF EARNINGS..... 7-20
III.D. ALIMONY OR CHILD SUPPORT 7-21
III.E. ASSETS AND INCOME FROM ASSETS..... 7-22
III.F. NET INCOME FROM RENTAL PROPERTY 7-22
III.G. RETIREMENT ACCOUNTS 7-23
III.H. INCOME FROM EXCLUDED SOURCES 7-24
III.I. ZERO ANNUAL INCOME STATUS 7-24

PART IV: VERIFYING MANDATORY DEDUCTIONS

IV.A. DEPENDENT AND ELDERLY/DISABLED HOUSEHOLD DEDUCTIONS 7-25
IV.B. MEDICAL EXPENSE DEDUCTION 7-26
IV.C. DISABILITY ASSISTANCE EXPENSES 7-28
IV.D. CHILD CARE EXPENSES..... 7-30

EXHIBITS

7-1: SUMMARY OF DOCUMENTATION REQUIREMENTS
FOR NONCITIZENS 7-33

Chapter 8
LEASING AND INSPECTIONS

INTRODUCTION 8-1

PART I: LEASING

I.A. OVERVIEW 8-1
I.B. LEASE ORIENTATION 8-2
I.C. EXECUTION OF LEASE 8-3
I.D. MODIFICATIONS TO THE LEASE 8-4
I.E. SECURITY DEPOSITS 8-6
I.F. PAYMENTS UNDER THE LEASE 8-7
I.G. MINIMUM HEATING STANDARDS 8-11

PART II: INSPECTIONS

II.A. OVERVIEW 8-12
II.B. TYPES OF INSPECTIONS 8-12
II.C. NOTICE AND SCHEDULING OF INSPECTIONS 8-14
II.D. INSPECTION RESULTS 8-15

EXHIBITS

8-1: SMOKE-FREE POLICY 8-17

**Chapter 9
REEXAMINATIONS**

INTRODUCTION 9-1

**PART I: ANNUAL REEXAMINATIONS FOR FAMILIES PAYING
INCOME-BASED RENTS**

I.A. OVERVIEW 9-3
I.B. STREAMLINED ANNUAL REEXAMINATIONS..... 9-4
I.C. SCHEDULING ANNUAL REEXAMINATIONS 9-4
I.D. CONDUCTING ANNUAL REEXAMINATIONS 9-6
I.E. EFFECTIVE DATES..... 9-8

PART II: REEXAMINATIONS FOR FAMILIES PAYING FLAT RENTS

II.A. OVERVIEW 9-9
II.B. FULL REEXAMINATION OF FAMILY INCOME AND COMPOSITION..... 9-9
II.C. REEXAMINATION OF FAMILY COMPOSITION (“ANNUAL UPDATE”) 9-10

PART III: INTERIM REEXAMINATIONS

III.A. OVERVIEW 9-13
III.B. CHANGES IN FAMILY AND HOUSEHOLD COMPOSITION..... 9-13
III.C. CHANGES AFFECTING INCOME OR EXPENSES..... 9-15
III.D. PROCESSING THE INTERIM REEXAMINATION 9-17

PART IV: RECALCULATING TENANT RENT

IV.A. OVERVIEW 9-19
IV.B. CHANGES IN UTILITY ALLOWANCES 9-19
IV.C. NOTIFICATION OF NEW TENANT RENT 9-19
IV.D. DISCREPANCIES..... 9-20

Chapter 10
PETS

INTRODUCTION 10-1

PART I: SERVICE ANIMALS AND ASSISTANCE ANIMALS

I.A. OVERVIEW 10-3
I.B. APPROVAL OF ASSISTANCE ANIMALS 10-4
I.C. CARE AND HANDLING 10-5

PART II: PET POLICIES FOR ALL DEVELOPMENTS

II.A. OVERVIEW 10-7
II.B. MANAGEMENT APPROVAL OF PETS 10-7
II.C. STANDARDS FOR PETS 10-9
II.D. PET RULES 10-11

**PART III: PET DEPOSITS AND FEES IN
ELDERLY/DISABLED DEVELOPMENTS**

III.A. OVERVIEW 10-17

**PART IV: PET DEPOSITS AND FEES IN GENERAL
OCCUPANCY DEVELOPMENTS**

IV.A. OVERVIEW 10-18
IV.B. PET DEPOSITS 10-18
IV.C. NON-REFUNDABLE NOMINAL PET FEE 10-19
IV.D. OTHER CHARGES 10-20

**Chapter 11
COMMUNITY SERVICE**

INTRODUCTION 11-1

PART I: COMMUNITY SERVICE REQUIREMENT

I.A. OVERVIEW 11-1
I.B. REQUIREMENTS..... 11-2
I.C. DETERMINATION OF EXEMPTION STATUS AND COMPLIANCE 11-7
I.D. DOCUMENTATION AND VERIFICATION..... 11-11
I.E. NONCOMPLIANCE..... 11-13

PART II: IMPLEMENTATION OF COMMUNITY SERVICE

II.A. OVERVIEW 11-17

EXHIBITS

11-1: COMMUNITY SERVICE AND SELF-SUFFICIENCY POLICY 11-19
11-2: DEFINITION OF A PERSON WITH A DISABILITY UNDER SOCIAL
SECURITY ACTS 216(i)(1) and Section 1416(excerpt) FOR PURPOSES
OF EXEMPTION FROM COMMUNITY SERVICE 11-25
11-3: PHA DETERMINATION OF EXEMPTION FOR COMMUNITY SERVICE..... 11-27
11-4 CSSR WORK-OUT AGREEMENT 11-29

Chapter 12
TRANSFER POLICY

INTRODUCTION 12-1

PART I: EMERGENCY TRANSFERS

I.A. OVERVIEW 12-1
I.B. EMERGENCY TRANSFERS 12-2
I.C. EMERGENCY TRANSFER PROCEDURES 12-2
I.D. COSTS OF TRANSFER 12-2

PART II: PHA REQUIRED TRANSFERS

II.A. OVERVIEW 12-3
II.B. TYPES OF PHA REQUIRED TRANSFERS 12-3
II.C. ADVERSE ACTION 12-6
II.D. COST OF TRANSFER 12-6

PART III: TRANSFERS REQUESTED BY TENANTS

III.A. OVERVIEW 12-7
III.B. TYPES OF RESIDENT REQUESTED TRANSFERS 12-7
III.C. ELIGIBILITY FOR TRANSFER 12-18
III.D. SECURITY DEPOSITS 12-19
III.E. COST OF TRANSFER 12-19
III.F. HANDLING OF REQUESTS 12-10

PART IV: TRANSFER PROCESSING

IV.A. OVERVIEW 12-11
IV.B. TRANSFER LIST 12-11
IV.C. TRANSFER OFFER POLICY 12-12
IV.D. GOOD CAUSE FOR UNIT REFUSAL 12-12
IV.E. DECONCENTRATION 12-13
IV.F. REEXAMINATION POLICIES FOR TRANSFERS 12-13

Chapter 13
LEASE TERMINATIONS

INTRODUCTION 13-1

PART I: TERMINATION BY TENANT

I.A. TENANT CHOOSES TO TERMINATE THE LEASE..... 13-3

PART II: TERMINATION BY PHA – MANDATORY

II.A. OVERVIEW 13-5
II.B. FAILURE TO PROVIDE CONSENT..... 13-5
II.C. FAILURE TO DOCUMENT CITIZENSHIP 13-5
II.D. FAILURE TO DISCLOSE AND DOCUMENT SOCIAL SECURITY NUMBERS... 13-6
II.E. FAILURE TO ACCEPT THE PHA’S OFFER OF A LEASE REVISION 13-6
II.F. METHAMPHETAMINE CONVICTION..... 13-7
II.G. LIFETIME REGISTERED SEX OFFENDERS 13-7
II.H. NONCOMPLIANCE WITH COMMUNITY SERVICE REQUIREMENTS..... 13-7
II.I. DEATH OF A SOLE FAMILY MEMBER 13-7

PART III: TERMINATION BY PHA – OTHER AUTHORIZED REASONS

III.A. OVERVIEW 13-9
III.B. MANDATORY LEASE PROVISIONS..... 13-10
III.C. OTHER AUTHORIZED REASONS FOR TERMINATION..... 13-16
III.D. ALTERNATIVES TO TERMINATION OF TENANCY 13-20
III.E. CRITERIA FOR DECIDING TO TERMINATE TENANCY 13-21
III.F. TERMINATIONS RELATED TO DOMESTIC VIOLENCE,
DATING VIOLENCE, SEXUAL ASSAULT, OR STALKING 13-25

**PART IV: NOTIFICATION REQUIREMENTS, EVICTION
PROCEDURES AND RECORD KEEPING**

IV.A. OVERVIEW 13-29
IV.B. CONDUCTING CRIMINAL RECORDS CHECKS 13-29
IV.C. DISCLOSURE OF CRIMINAL RECORDS TO FAMILY 13-30
IV.D. LEASE TERMINATION NOTICE..... 13-31
IV.E. EVICTION..... 13-33
IV.F. NOTIFICATION TO POST OFFICE 13-34
IV.G. RECORD KEEPING 13-34

Chapter 14
GRIEVANCES AND APPEALS

INTRODUCTION 14-1

PART I: INFORMAL HEARINGS FOR PUBLIC HOUSING APPLICANTS

I.A. OVERVIEW 14-1
I.B. INFORMAL HEARING PROCESS 14-2

PART II: INFORMAL HEARINGS WITH REGARD TO NONCITIZENS

II.A. HEARING AND APPEAL PROVISIONS FOR NONCITIZENS 14-5

PART III: GRIEVANCE PROCEDURES FOR PUBLIC HOUSING RESIDENTS

III.A. REQUIREMENTS 14-9
III.B. DEFINITIONS 14-10
III.C. APPLICABILITY 14-11
III.D. INFORMAL SETTLEMENT OF GRIEVANCE 14-12
III.E. PROCEDURES TO OBTAIN A HEARING 14-13
III.F. SELECTION OF HEARING OFFICER 14-15
III.G. PROCEDURES GOVERNING THE HEARING 14-16
III.H. DECISION OF THE HEARING OFFICER 14-20

EXHIBITS

14-1: SAMPLE GRIEVANCE PROCEDURE 14-23

Chapter 15
PROGRAM INTEGRITY

INTRODUCTION 15-1

**PART I: PREVENTING, DETECTING, AND
INVESTIGATING ERRORS AND PROGRAM ABUSE**

I.A. PREVENTING ERRORS AND PROGRAM ABUSE 15-3
I.B. DETECTING ERRORS AND PROGRAM ABUSE 15-4
I.C. INVESTIGATING ERRORS AND PROGRAM ABUSE 15-5

PART II: CORRECTIVE MEASURES AND PENALTIES

II.A. UNDER- OR OVERPAYMENT 15-7
II.B. FAMILY-CAUSED ERRORS AND PROGRAM ABUSE 15-8
II.C. PHA-CAUSED ERRORS OR PROGRAM ABUSE 15-10
II.D. CRIMINAL PROSECUTION 15-12
II.E. FRAUD AND PROGRAM ABUSE RECOVERIES 15-13

Chapter 16
PROGRAM ADMINISTRATION

INTRODUCTION 16-1

PART I: SETTING UTILITY ALLOWANCES

I.A. OVERVIEW 16-3
I.B. UTILITY ALLOWANCES 16-3
I.C. SURCHARGES FOR PHA-FURNISHED UTILITIES..... 16-5
I.D. NOTICE REQUIREMENTS 16-5
I.E. REASONABLE ACCOMMODATION..... 16-6

PART II: ESTABLISHING FLAT RENTS

II.A. OVERVIEW 16-7
II.B. FLAT RENTS..... 16-7

PART III: FAMILY DEBTS TO THE PHA

III.A. OVERVIEW 16-9
III.B. REPAYMENT POLICY..... 16-10

PART IV: PUBLIC HOUSING ASSESSMENT SYSTEM (PHAS)

IV.A. OVERVIEW 16-13
IV.B. PHAS INDICATORS 16-13
IV.C. PHAS SCORING..... 16-15

PART V: RECORD KEEPING

V.A. OVERVIEW 16-17
V.B. RECORD RETENTION..... 16-17
V.C. RECORDS MANAGEMENT 16-18

**PART VI: REPORTING REQUIREMENTS FOR CHILDREN WITH
ELEVATED BLOOD LEAD LEVEL**

VI.A. REPORTING REQUIREMENTS 16-21

**PART VII: VIOLENCE AGAINST WOMEN ACT (VAWA): NOTIFICATION,
DOCUMENTATION, AND CONFIDENTIALITY**

VII.A. OVERVIEW 16-23
VII.B. DEFINITIONS..... 16-23
VII.C. NOTIFICATION 16-24
VII.D. DOCUMENTATION 16-26
VII.E. CONFIDENTIALITY..... 16-28

EXHIBITS

16-1: SAMPLE NOTICE OF OCCUPANCY RIGHTS UNDER THE
VIOLENCE AGAINST WOMEN ACT, FORM HUD-5380 16-29
16-2: CERTIFICATION OF DOMESTIC VIOLENCE, DATING
VIOLENCE, SEXUAL ASSAULT, OR STALKING AND
ALTERNATE DOCUMENTATION, FORM HUD-5382..... 16-35
16-3 EMERGENCY TRANSFER PLAN FOR VICTIMS OF
DOMESTIC VIOLENCE, DATING VIOLENCE, SEXUAL ASSAULT,
OR STALKING 16-37
16-4 EMERGENCY TRANSFER REQUEST FOR CERTAIN VICTIMS
OF DOMESTIC VIOLENCE, DATING VIOLENCE, SEXUAL ASSAULT,
OR STALKING, FORM HUD-5383..... 16-41

Chapter 1

OVERVIEW OF THE PROGRAM AND PLAN

INTRODUCTION

The PHA receives its operating subsidy for the public housing program from the Department of Housing and Urban Development. The PHA is not a federal department or agency. A public housing agency (PHA) is a governmental or public body, created and authorized by state law to develop and operate housing and housing programs for low-income families. The PHA enters into an Annual Contributions Contract with HUD to administer the public housing program. The PHA must ensure compliance with federal laws, regulations and notices and must establish policies and procedures to clarify federal requirements and to ensure consistency in program operation.

This chapter contains information about the PHA and its programs with emphasis on the public housing program. It also contains information about the purpose, intent and use of the plan and guide.

There are three parts to this chapter:

Part I: The Public Housing Agency (PHA). This part includes a description of the PHA, its jurisdiction, its programs, and its mission and intent.

Part II: The Public Housing Program. This part contains information about public housing operation, roles and responsibilities, and partnerships.

Part III: The Admissions and Continued Occupancy (ACOP). This part discusses the purpose and organization of the plan and its revision requirements.

PART I: THE PHA

1-I.A. OVERVIEW

This part describes the PHA's creation and authorization, the general structure of the organization, and the relationship between the PHA Board and staff.

1-I.B. ORGANIZATION AND STRUCTURE OF THE PHA

Public housing is funded by the federal government and administered by the New Brunswick Housing Authority for the jurisdiction of the City of New Brunswick.

PHAs are governed by a board of officials that are generally called “commissioners.” Although some PHAs may use a different title for their officials, this document will hitherto refer to the “board of commissioners” or the “board” when discussing the board of governing officials.

Commissioners are appointed in accordance with state housing law and generally serve in the same capacity as the directors of a corporation. The board of commissioners establishes policies under which the PHA conducts business, and ensures that those policies are followed by PHA staff. The board is responsible for preserving and expanding the agency’s resources and assuring the agency’s continued viability and success.

Formal actions of the PHA are taken through written resolutions, adopted by the board and entered into the official records of the PHA.

The principal staff member of the PHA is the executive director (ED), who is selected and hired by the board. The ED oversees the day to day operations of the PHA and is directly responsible for carrying out the policies established by the commissioners. The ED’s duties include hiring, training, and supervising the PHA’s staff, as well as budgeting and financial planning for the agency. Additionally, the ED is charged with ensuring compliance with federal and state laws, and program mandates. In some PHAs, the ED is known by another title, such as chief executive officer or president.

1-I.C. PHA MISSION

The purpose of a mission statement is to communicate the purpose of the agency to people inside and outside of the agency. It provides the basis for strategy development, identification of critical success factors, resource allocation decisions, as well as ensuring client and stakeholder satisfaction.

PHA Policy

The mission of the New Brunswick Housing Authority is to assist eligible families by providing decent, affordable housing as they move to achieve self-sufficiency. The New Brunswick Housing Authority is committed to operate in an ethical, efficient and professional manner. The New Brunswick Housing authority will establish and maintain partner/relationships with its clients and appropriate community agencies in order to accomplish this mission.

1-I.D. THE PHA'S COMMITMENT TO ETHICS AND SERVICE

As a public service agency, the PHA is committed to providing excellent service to all public housing applicants, residents, and the public. In order to provide superior service, the PHA resolves to:

- Administer applicable federal and state laws and regulations to achieve high ratings in compliance measurement indicators while maintaining efficiency in program operation to ensure fair and consistent treatment of clients served.
- Provide decent, safe, and sanitary housing in good repair – in compliance with program uniform physical condition standards – for very low- and low-income families.
- Achieve a healthy mix of incomes in its public housing developments by attracting and retaining higher income families and by working toward deconcentration of poverty goals.
- Encourage self-sufficiency of participant families and assist in the expansion of family opportunities which address educational, socio-economic, recreational and other human services needs.
- Promote fair housing and the opportunity for very low- and low-income families of all races, ethnicities, national origins, religions, ethnic backgrounds, and with all types of disabilities, to participate in the public housing program and its services.
- Create positive public awareness and expand the level of family and community support in accomplishing the PHA's mission.
- Attain and maintain a high level of standards and professionalism in day-to-day management of all program components.
- Administer an efficient, high-performing agency through continuous improvement of the PHA's support systems and commitment to our employees and their development.

The PHA will make every effort to keep residents informed of program rules and regulations, and to advise participants of how the program rules affect them.

PART II: THE PUBLIC HOUSING PROGRAM

1-II.A. OVERVIEW AND HISTORY OF THE PROGRAM

The intent of this section is to provide the public and staff an overview of the history and operation of public housing.

The United States Housing Act of 1937 (the “Act”) is responsible for the birth of federal housing program initiatives, known as public housing. The Act was intended to provide financial assistance to states and cities for public works projects, slum clearance and the development of affordable housing for low-income residents. There have been many changes to the program since its inception in 1937.

The Housing Act of 1965 established the availability of federal assistance, administered through local public agencies, to provide rehabilitation grants for home repairs and rehabilitation. This act also created the federal Department of Housing and Urban Development (HUD).

The Housing Act of 1969 created an operating subsidy for the public housing program for the first time. Until that time, public housing was a self-sustaining program.

In 1998, the Quality Housing and Work Responsibility Act (QHWRA) – also known as the Public Housing Reform Act or Housing Act of 1998 – was signed into law. Its purpose was to provide more private sector management guidelines to the public housing program and provide residents with greater choices. It also allowed PHAs more remedies to replace or revitalize severely distressed public housing developments. Highlights of the Reform Act include: the establishment of flat rents; the requirement for PHAs to develop five-year and annual plans; income targeting, a requirement that 40% of all new admissions in public housing during any given fiscal year be reserved for extremely low-income families; and resident self-sufficiency incentives.

1-II.B. PUBLIC HOUSING PROGRAM BASICS

HUD writes and publishes regulations in order to implement public housing laws enacted by Congress. HUD contracts with the PHA to administer programs in accordance with HUD regulations and provides an operating subsidy to the PHA. The PHA must create written policies that are consistent with HUD regulations. Among these policies is the PHA's Admissions and Continued Occupancy Policy (ACOP). The ACOP must be approved by the board of commissioners of the PHA.

The job of the PHA pursuant to HUD regulations is to provide decent, safe, and sanitary housing, in good repair, to low-income families at an affordable rent. The PHA screens applicants for public housing and, if they are determined to be eligible for the program, the PHA makes an offer of a housing unit. If the applicant accepts the offer, the PHA and the applicant will enter into a written lease agreement. At this point, the applicant becomes a tenant in the public housing program.

In the context of the public housing program, a tenant is defined as the adult person(s) (other than a live-in aide who (1) executed the lease with the PHA as lessee of the dwelling unit, or, if no such person now resides in the unit, (2) who resides in the unit, and who is the remaining head of household of the tenant family residing in the dwelling unit. [24 CFR 966.53]. The Public Housing Occupancy Guidebook refers to tenants as "residents." The terms "tenant" and "resident" are used interchangeably in this policy. Additionally, this policy uses the term "family" or "families" for residents or applicants, depending on context.

Since the PHA owns the public housing development, the PHA is the landlord. The PHA must comply with all of the legal and management responsibilities of a landlord in addition to administering the program in accordance with HUD regulations and PHA policy.

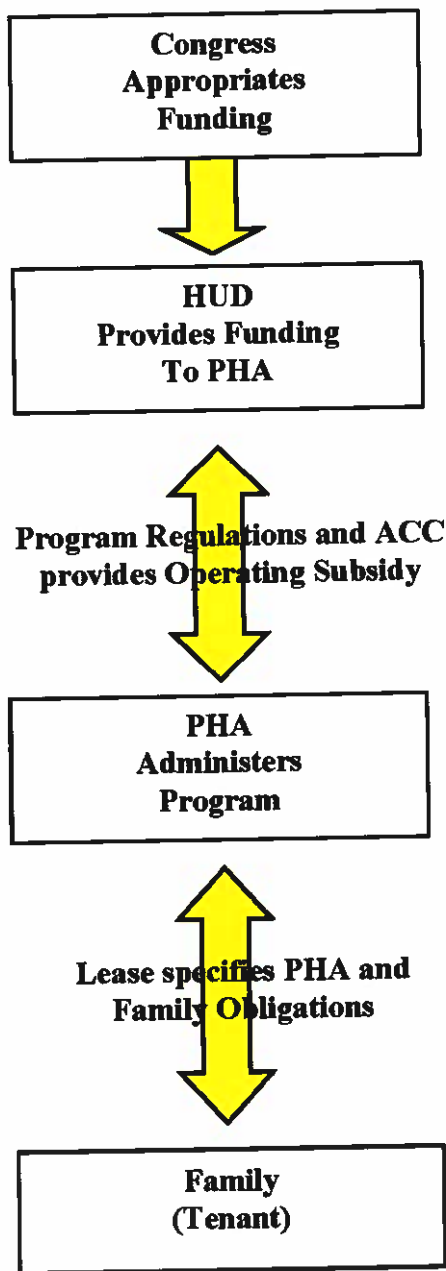
1-II.C. PUBLIC HOUSING PARTNERSHIPS

To administer the public housing program, the PHA must enter into an Annual Contributions Contract (ACC) with HUD. The PHA also enters into a contractual relationship with the tenant through the public housing lease. These contracts define and describe the roles and responsibilities of each party.

In addition to the ACC, the PHA and family must also comply with federal regulations and other HUD publications and directives. For the program to work and be successful, all parties involved – HUD, the PHA, and the tenant – play an important role.

The chart on the following page illustrates key aspects of these relationships.

The Public Housing Relationships



What does HUD do?

Federal law is the source of HUD responsibilities. HUD has the following major responsibilities:

- Develop regulations, requirements, handbooks, notices and other guidance to implement housing legislation passed by Congress
- Allocate operating subsidies to PHAs
- Allocate capital funding to PHAs
- Provide technical assistance to PHAs on interpreting and applying program requirements
- Monitor PHA compliance with program requirements and PHA performance in program administration.

What does the PHA do?

The PHA's responsibilities originate in federal regulations and the ACC. The PHA owns and manages public housing developments, administers the program under contract with HUD and has the following major responsibilities:

- Ensure compliance with all non-discrimination, equal opportunity, and fair housing laws, and ensure that the program is accessible to persons with disabilities
- Establish local policies and procedures for operating the program
- Accept applications from interested applicant families and determine whether they are income eligible for the program
- Maintain waiting list and select families for admission
- Screen applicant families for suitability as renters
- Maintain housing units by making any necessary repairs in a timely manner
- Make unit offers to families (minimize vacancies without overcrowding)
- Maintain properties to the standard of decent, safe, sanitary, and in good repair (including assuring compliance with uniform physical conditions standards)
- Make sure the PHA has adequate financial resources to maintain its housing stock
- Perform regular reexaminations of family income and composition in accordance with HUD requirements
- Collect rent due from the assisted family and comply with and enforce provisions of the lease
- Ensure that families comply with program rules
- Provide families with prompt and professional service
- Comply with HUD regulations and requirements, the Annual Contributions Contract, HUD-approved applications for funding, the PHA's ACOP, and other applicable federal, state and local laws.

What does the tenant do?

The tenant's responsibilities are articulated in the public housing lease. The tenant has the following broad responsibilities:

- Comply with the terms of the lease and PHA house rules, as applicable
- Provide the PHA with complete and accurate information, determined by the PHA to be necessary for administration of the program
- Cooperate in attending all appointments scheduled by the PHA
- Allow the PHA to inspect the unit at reasonable times and after reasonable notice
- Take responsibility for care of the housing unit, including any violations of uniform physical condition standards caused by the family
- Not engage in drug-related or violent criminal activity
- Notify the PHA before moving or termination of the lease
- Use the assisted unit only for residence and as the sole residence of the family. Not sublet the unit or assign the lease
- Promptly notify the PHA of any changes in family composition
- Not commit fraud, bribery, or any other corrupt or criminal act in connection with any housing programs
- Take care of the housing unit and report maintenance problems to the PHA promptly

If all parties fulfill their obligations in a professional and timely manner, the program responsibilities will be fulfilled in an effective manner.

1-II.D. APPLICABLE REGULATIONS

Applicable regulations include:

- 24 CFR Part 5: General Program Requirements
- 24 CFR Part 8: Nondiscrimination
- 24 CFR Part 35: Lead-Based Paint
- 24 CFR Part 902: Public Housing Assessment System
- 24 CFR Part 903: Public Housing Agency Plans
- 24 CFR Part 945: Designated Housing
- 24 CFR Part 960: Admission and Occupancy Policies
- 24 CFR Part 965: PHA-Owned or Leased Projects – General Provisions
- 24 CFR Part 966: Lease and Grievance Procedures

PART III: THE ADMISSIONS AND CONTINUED OCCUPANCY POLICIES

1-III.A. OVERVIEW AND PURPOSE OF THE POLICY

The ACOP is the PHA's written statement of policies used to carry out the housing program in accordance with federal law and regulations, and HUD requirements. The ACOP is required by HUD and it must be available for public review [CFR 24 Part 903]. The ACOP also contains policies that support the objectives contained in the PHA's Agency Plan.

All issues related to public housing not addressed in this ACOP are governed by federal regulations, HUD handbooks and guidebooks, notices and applicable state and local laws. The policies in this ACOP have been designed to ensure compliance with the consolidated ACC and all HUD-approved applications for program funding. The PHA is responsible for complying with all changes in HUD regulations pertaining to public housing. If such changes conflict with this plan, HUD regulations will have precedence.

1-III.B. CONTENTS OF THE POLICY

Unlike the housing choice voucher program, HUD regulations for public housing do not contain a list of what must be included in the ACOP. However, individual regulations contain requirements of inclusion in the PHA's written policy. At a minimum, the ACOP plan should cover PHA policies on these subjects:

- The organization of the waiting list and how families are selected and offered available units, including any PHA admission preferences, procedures for removing applicant names from the waiting list, and procedures for closing and reopening the PHA waiting list (Chapters 4 and 5)
- Transfer policies and the circumstances under which a transfer would take precedence over an admission (Chapter 12)
- Standards for determining eligibility, suitability for tenancy, and the size and type of the unit needed (Chapters 3 and 5)
- Procedures for verifying the information the family has provided (Chapter 7)
- The method for achieving deconcentration of poverty and income-mixing of public housing developments (Chapter 4)
- Grievance procedures (Chapter 14)
- Policies concerning payment by a family to the PHA of amounts the family owes the PHA (Chapter 15 and 16)
- Interim redeterminations of family income and composition (Chapter 9)
- Policies regarding community service requirements; (Chapter 11)
- Policies and rules about safety and ownership of pets in public housing (Chapter 10).

New Approach to Policy Development

HUD has developed an approach to monitoring PHAs that emphasizes the importance of consistency in operation and decision-making. The ACOP supports that goal by clearly setting forth the PHA's operating policies.

A primary focus of HUD's Rental Integrity Monitoring (RIM) program has been consistency in how PHAs conduct their business and in how HUD monitors PHA activities. Referring to and following the ACOP is essential to maintaining consistency in applying PHA policy.

HUD makes a distinction between mandatory policies and non-mandatory policies:

- Mandatory policies: those driven by legislation, regulations, current handbooks, current PIH notices, and legal opinions from the Office of General Counsel
- Optional, non-binding guidance: includes guidebooks, FAQs, PIH notices that have expired, and recommendations from individual HUD staff.

HUD expects PHAs to develop policies and procedures that are consistent with mandatory policies and to make clear the optional policies the PHA has adopted. The ACOP is comprised of mandatory policies and optional PHA policy. HUD's new direction emphasizes the need for a clearly written and comprehensive ACOP to guide staff in the clear and consistent application of policy.

HUD suggestions, recommendations, written issuances, and guidance are consistent with mandatory federal policy. Therefore, using HUD guidance in the preparation of PHA policy, even though it is not mandatory, provides a PHA with a "safe harbor." If a PHA adopts its own optional policy, it must make its own determination that such policy is consistent with legislation, regulations, and other mandatory requirements. There may be very good reasons for adopting a policy or procedure that is different than that suggested by HUD, but PHAs should carefully think through those decisions and be able to articulate how their policy is consistent with federal laws, regulations and mandatory policy.

1-III.C. UPDATING AND REVISING THE POLICY

The PHA will revise this ACOP as needed to comply with changes in HUD regulations. The original policy and any changes must be approved by the board of commissioners of the PHA, the pertinent sections included in the Agency Plan, and a copy provided to HUD.

PHA Policy

The PHA will review and update the ACOP as needed to reflect changes in regulations, PHA operations, or when needed to ensure staff consistency in operation.

Chapter 2

FAIR HOUSING AND EQUAL OPPORTUNITY

INTRODUCTION

This chapter explains the laws and HUD regulations requiring PHAs to affirmatively further civil rights and fair housing in all federally-assisted housing programs. The letter and spirit of these laws are implemented through consistent policy and procedures. The responsibility to further nondiscrimination pertains to all areas of the PHA's public housing operations.

This chapter describes HUD regulations and PHA policies related to these topics in three parts:

Part I: Nondiscrimination. This part presents the body of laws and regulations governing the responsibilities of the PHA regarding nondiscrimination.

Part II: Policies Related to Persons with Disabilities. This part discusses the rules and policies of the public housing program related to reasonable accommodation for persons with disabilities. These rules and policies are based on the Fair Housing Act (42.U.S.C.) and Section 504 of the Rehabilitation Act of 1973, and incorporate guidance from the Joint Statement of The Department of Housing and Urban Development and the Department of Justice (DOJ), issued May 17, 2004.

Part III: Prohibition of Discrimination Against Limited English Proficiency Persons. This part details the obligations of the PHA to ensure meaningful access to the public housing program and its activities by persons with limited English proficiency (LEP). This part incorporates the Final Guidance to Federal Financial Assistance Recipients Regarding Title VI Prohibition against National Origin Discrimination Affecting Limited English Proficient Persons published January 22, 2007, in the *Federal Register*.

PART I: NONDISCRIMINATION

2-I.A. OVERVIEW

Federal laws require PHAs to treat all applicants and tenant families equally, providing the same quality of service, regardless of family characteristics and background. Federal law prohibits discrimination in housing on the basis of race, color, religion, sex, national origin, age, familial status, and disability. In addition, HUD regulations provide for additional protections regarding sexual orientation, gender identity, and marital status. The PHA will comply fully with all federal, state, and local nondiscrimination laws, and with rules and regulations governing fair housing and equal opportunity in housing and employment, including:

- Title VI of the Civil Rights Act of 1964
- Title VIII of the Civil Rights Act of 1968 (as amended by the Community Development Act of 1974 and the Fair Housing Amendments Act of 1988)
- Executive Order 11063
- Section 504 of the Rehabilitation Act of 1973
- The Age Discrimination Act of 1975
- Title II of the Americans with Disabilities Act (to the extent that it applies, otherwise Section 504 and the Fair Housing Amendments govern)
- The Equal Access to Housing in HUD Programs Regardless of Sexual Orientation or Gender Identity Final Rule, published in the *Federal Register* February 3, 2012 and further clarified in Notice PIH 2014-20
- The Violence against Women Act of 2013 (VAWA)
- Any applicable state laws or local ordinances and any legislation protecting individual rights of tenants, applicants, or staff that may subsequently be enacted

When more than one civil rights law applies to a situation, the laws will be read and applied together.

PHA Policy

The PHA will comply with all state or local nondiscrimination laws that apply.

2-I.B. NONDISCRIMINATION

Federal regulations prohibit discrimination against certain protected classes and other groups of people. State and local requirements, as well as PHA policies, can prohibit discrimination against additional classes of people.

The PHA shall not discriminate because of race, color, sex, religion, familial status, age, disability or national origin (called "protected classes").

Familial status includes children under the age of 18 living with parents or legal custodians, pregnant women, and people securing custody of children under the age of 18.

The PHA will not discriminate on the basis of marital status, actual or perceived gender identity, or actual or perceived sexual orientation [FR Notice 02/03/12].

PHA Policy

The PHA does not identify any additional protected classes.

The PHA will not use any of these factors to:

- Deny to any family the opportunity to apply for housing, nor deny to any qualified applicant the opportunity to participate in the public housing program
- Provide housing that is different from that provided to others
- Subject anyone to segregation or disparate treatment
- Subject anyone to sexual harassment
- Restrict anyone's access to any benefit enjoyed by others in connection with the housing program
- Treat a person differently in determining eligibility or other requirements for admission
- Steer an applicant or tenant toward or away from a particular area based on any of these factors
- Deny anyone access to the same level of services
- Deny anyone the opportunity to participate in a planning or advisory group that is an integral part of the housing program
- Discriminate in the provision of residential real estate transactions
- Discriminate against someone because they are related to or associated with a member of a protected class
- Publish or cause to be published an advertisement or notice indicating the availability of housing that prefers or excludes persons who are members of a protected class

Providing Information to Families

The PHA must take steps to ensure that families are fully aware of all applicable civil rights laws. As part of the public housing orientation process, the PHA will provide information to public housing applicant families about civil rights requirements.

Discrimination Complaints

If an applicant or tenant family believes that any family member has been discriminated against by the PHA, the family should advise the PHA. The PHA should make every reasonable attempt to determine whether the applicant or tenant family's assertions have merit and take any warranted corrective action.

In all cases, the PHA may advise the family to file a fair housing complaint if the family feels they have been discriminated against under the Fair Housing Act.

Upon receipt of a housing discrimination complaint, the PHA is required to:

- Provide written notice of the complaint to those alleged and inform the complainant that such notice was made
- Investigate the allegations and provide the complainant and those alleged with findings and either a proposed corrective action or an explanation of why corrective action is not warranted
- Keep records of all complaints, investigations, notices, and corrective actions
[Notice PIH 2014-20]

PHA Policy

Applicants or tenant families who believe that they have been subject to unlawful discrimination may notify the PHA either orally or in writing.

Within 10 business days of receiving the complaint, the PHA will provide a written notice to those alleged to have violated the rule. The PHA will also send a written notice to the complainant informing them that notice was sent to those alleged to have violated the rule, as well as information on how to complete and submit a housing discrimination complaint form to HUD's Office of Fair Housing and Equal Opportunity (FHEO).

The PHA will attempt to remedy discrimination complaints made against the PHA and will conduct an investigation into all allegations of discrimination.

Within 10 business days following the conclusion of the PHA's investigation, the PHA will provide the complainant and those alleged to have violated the rule with findings and either a proposed corrective action plan or an explanation of why corrective action is not warranted.

The PHA will keep a record of all complaints, investigations, notices, and corrective actions. (See Chapter 16.)

PART II: POLICIES RELATED TO PERSONS WITH DISABILITIES

2-II.A. OVERVIEW

One type of disability discrimination prohibited by the Fair Housing Act is the refusal to make reasonable accommodation in rules, policies, practices, or services when such accommodation may be necessary to afford a person with a disability the equal opportunity to use and enjoy a program or dwelling under the program.

The PHA must ensure that persons with disabilities have full access to the PHA's programs and services. This responsibility begins with the first inquiry of an interested family and continues through every programmatic area of the public housing program [24 CFR 8].

The PHA must provide a notice to each tenant that the tenant may, at any time during the tenancy, request reasonable accommodation of a handicap of a household member, including reasonable accommodation so that the tenant can meet lease requirements or other requirements of tenancy [24 CFR 966.7(b)].

PHA Policy

The PHA will ask all applicants and resident families if they require any type of accommodations, in writing, on the intake application, reexamination documents, and notices of adverse action by the PHA, by including the following language:

“If you or anyone in your family is a person with disabilities, and you require a specific accommodation in order to fully utilize our programs and services, please contact the housing authority.”

A specific position and phone number will be provided as the contact person for requests for accommodation for persons with disabilities.

2-II.B. DEFINITION OF REASONABLE ACCOMMODATION

A "reasonable accommodation" is a change, exception, or adjustment to a policy, practice or service that may be necessary for a person with a disability to have an equal opportunity to use and enjoy a dwelling, including public and common use spaces. Since policies and services may have a different effect on persons with disabilities than on other persons, treating persons with disabilities exactly the same as others will sometimes deny them an equal opportunity to use and enjoy a dwelling. [Joint Statement of the Departments of HUD and Justice: Reasonable Accommodations under the Fair Housing Act]

Federal regulations stipulate that requests for accommodations will be considered reasonable if they do not create an "undue financial and administrative burden" for the PHA, or result in a "fundamental alteration" in the nature of the program or service offered. A fundamental alteration is a modification that alters the essential nature of a provider's operations.

Types of Reasonable Accommodations

When it is reasonable (see definition above and Section 2-II.E), the PHA shall accommodate the needs of a person with disabilities. Examples include but are not limited to:

- Permitting applications and reexaminations to be completed by mail
- Providing "large-print" forms
- Conducting home visits
- Permitting a higher utility allowance for the unit if a person with disabilities requires the use of specialized equipment related to the disability
- Modifying or altering a unit or physical system if such a modification or alteration is necessary to provide equal access to a person with a disability
- Installing a ramp into a dwelling or building
- Installing grab bars in a bathroom
- Installing visual fire alarms for hearing impaired persons
- Allowing a PHA-approved live-in aide to reside in the unit if that person is determined to be essential to the care of a person with disabilities, is not obligated for the support of the person with disabilities, and would not be otherwise living in the unit.
- Providing a designated handicapped-accessible parking space
- Allowing an assistance animal
- Permitting an authorized designee or advocate to participate in the application or certification process and any other meetings with PHA staff
- Displaying posters and other housing information in locations throughout the PHA's office in such a manner as to be easily readable from a wheelchair

2-II.C. REQUEST FOR AN ACCOMMODATION

If an applicant or participant indicates that an exception, change, or adjustment to a rule, policy, practice, or service is needed because of a disability, HUD requires that the PHA treat the information as a request for a reasonable accommodation, even if no formal request is made [Joint Statement of the Departments of HUD and Justice: Reasonable Accommodations under the Fair Housing Act].

The family must explain what type of accommodation is needed to provide the person with the disability full access to the PHA's programs and services.

If the need for the accommodation is not readily apparent or known to the PHA, the family must explain the relationship between the requested accommodation and the disability.

PHA Policy

The PHA will encourage the family to make its request in writing using a reasonable accommodation request form. However, the PHA will consider the accommodation any time the family indicates that an accommodation is needed whether or not a formal written request is submitted.

2-II.D. VERIFICATION OF DISABILITY

The regulatory civil rights definition for persons with disabilities is provided in Exhibit 2-1 at the end of this chapter. The definition of a person with a disability for the purpose of obtaining a reasonable accommodation is much broader than the HUD definition of disability which is used for waiting list preferences and income allowances.

Before providing an accommodation, the PHA must determine that the person meets the definition of a person with a disability, and that the accommodation will enhance the family's access to the PHA's programs and services.

If a person's disability is obvious or otherwise known to the PHA, and if the need for the requested accommodation is also readily apparent or known, no further verification will be required [Joint Statement of the Departments of HUD and Justice: Reasonable Accommodations under the Fair Housing Act].

If a family indicates that an accommodation is required for a disability that is not obvious or otherwise known to the PHA, the PHA must verify that the person meets the definition of a person with a disability, and that the limitations imposed by the disability require the requested accommodation.

When verifying a disability, the PHA will follow the verification policies provided in Chapter 7. All information related to a person's disability will be treated in accordance with the confidentiality policies provided in Chapter 16 (Program Administration). In addition to the general requirements that govern all verification efforts, the following requirements apply when verifying a disability:

- Third-party verification must be obtained from an individual identified by the family who is competent to make the determination. A medical doctor who is in a position to know about the individual's disability may provide verification of a disability [Joint Statement of the Departments of HUD and Justice: Reasonable Accommodations under the Fair Housing Act].
- The PHA must request only information that is necessary to evaluate the disability-related need for the accommodation. The PHA may not inquire about the nature or extent of any disability.
- Medical records will not be accepted or retained in the participant file.
- In the event that the PHA does receive confidential information about a person's specific diagnosis, treatment, or the nature or severity of the disability, the PHA will dispose of it. In place of the information, the PHA will note in the file that the disability and other requested information have been verified, the date the verification was received, and the name and address of the knowledgeable professional who sent the information [Notice PIH 2010-26].

2-II.E. APPROVAL/DENIAL OF A REQUESTED ACCOMMODATION [Joint Statement of the Departments of HUD and Justice: Reasonable Accommodations under the Fair Housing Act, Notice PIH 2010-26]

The PHA must approve a request for an accommodation if the following three conditions are met.

- The request was made by or on behalf of a person with a disability.
- There is a disability-related need for the accommodation.
- The requested accommodation is reasonable, meaning it would not impose an undue financial and administrative burden on the PHA, or fundamentally alter the nature of the PHA's operations.

Requests for accommodations must be assessed on a case-by-case basis. The determination of undue financial and administrative burden must be made on a case-by-case basis involving various factors, such as the overall size of the PHA's program with respect to the number of employees, type of facilities and size of budget, type of operation including composition and structure of workforce, the nature and cost of the requested accommodation, and the availability of alternative accommodations that would effectively meet the family's disability-related needs.

Before making a determination whether to approve the request, the PHA may enter into discussion and negotiation with the family, request more information from the family, or may require the family to sign a consent form so that the PHA may verify the need for the requested accommodation.

PHA Policy

After a request for an accommodation is presented, the PHA will respond, in writing, within 10 business days.

If the PHA denies a request for an accommodation because there is no relationship, or nexus, found between the disability and the requested accommodation, the notice will inform the family of the right to appeal the PHA's decision through an informal hearing (if applicable) or the grievance process (see Chapter 14).

If the PHA denies a request for an accommodation because it is not reasonable (it would impose an undue financial and administrative burden or fundamentally alter the nature of the PHA's operations), the PHA will discuss with the family whether an alternative accommodation could effectively address the family's disability-related needs without a fundamental alteration to the public housing program and without imposing an undue financial and administrative burden.

If the PHA believes that the family has failed to identify a reasonable alternative accommodation after interactive discussion and negotiation, the PHA will notify the family, in writing, of its determination within 10 business days from the date of the most recent discussion or communication with the family. The notice will inform the family of the right to appeal the PHA's decision through an informal hearing (if applicable) or the grievance process (see Chapter 14).

2-II.F. PROGRAM ACCESSIBILITY FOR PERSONS WITH HEARING OR VISION IMPAIRMENTS

HUD regulations require the PHA to take reasonable steps to ensure that persons with disabilities related to hearing and vision have reasonable access to the PHA's programs and services [24 CFR 8.6].

At the initial point of contact with each applicant, the PHA shall inform all applicants of alternative forms of communication that can be used other than plain language paperwork.

PHA Policy

To meet the needs of persons with hearing impairments, TTD/TTY (text telephone display / teletype) communication will be available.

To meet the needs of persons with vision impairments, large-print and audio versions of key program documents will be made available upon request. When visual aids are used in public meetings or presentations, or in meetings with PHA staff, one-on-one assistance will be provided upon request.

Additional examples of alternative forms of communication are sign language interpretation; having material explained orally by staff; or having a third party representative (a friend, relative or advocate, named by the applicant) to receive, interpret and explain housing materials and be present at all meetings.

2-II.G. PHYSICAL ACCESSIBILITY

The PHA must comply with a variety of regulations pertaining to physical accessibility, including the following.

- Notice PIH 2010-26
- Section 504 of the Rehabilitation Act of 1973
- The Americans with Disabilities Act of 1990
- The Architectural Barriers Act of 1968
- The Fair Housing Act of 1988

The PHA's policies concerning physical accessibility must be readily available to applicants and resident families. They can be found in three key documents.

- This policy, the Admissions and Continued Occupancy Policy, describes the key policies that govern the PHA's responsibilities with regard to physical accessibility.
- Notice PIH 2010-26 summarizes information about pertinent laws and implementing regulations related to nondiscrimination and accessibility in federally-funded housing programs.
- The PHA Plan provides information about self-evaluation, needs assessment, and transition plans.

The design, construction, or alteration of PHA facilities must conform to the Uniform Federal Accessibility Standards (UFAS). Notice PIH 2010-26 contains specific information on calculating the percentages of units for meeting UFAS requirements.

Newly-constructed facilities must be designed to be readily accessible to and usable by persons with disabilities. Alterations to existing facilities must be accessible to the maximum extent feasible, defined as not imposing an undue financial and administrative burden on the operations of the public housing program.

2-II.H. DENIAL OR TERMINATION OF ASSISTANCE

A PHA's decision to deny or terminate the assistance of a family that includes a person with disabilities is subject to consideration of reasonable accommodation [24 CFR 966.7].

When applicants with disabilities are denied assistance, the notice of denial must inform them of their right to request an informal hearing [24 CFR 960.208(a)].

When a family's lease is terminated, the notice of termination must inform the family of their right to request a hearing in accordance with the PHA's grievance process [24 CFR 966.4(l)(3)(ii)].

When reviewing reasonable accommodation requests, the PHA must consider whether reasonable accommodation will allow the family to overcome the problem that led to the PHA's decision to deny or terminate assistance. If a reasonable accommodation will allow the family to meet the requirements, the PHA must make the accommodation [24 CFR 966.7].

In addition, the PHA must provide reasonable accommodation for persons with disabilities to participate in the hearing process [24 CFR 966.56(h)].

PART III: IMPROVING ACCESS TO SERVICES FOR PERSONS WITH LIMITED ENGLISH PROFICIENCY (LEP)

2-III.A. OVERVIEW

Language for Limited English Proficiency Persons (LEP) can be a barrier to accessing important benefits or services, understanding and exercising important rights, complying with applicable responsibilities, or understanding other information provided by the public housing program. In certain circumstances, failure to ensure that LEP persons can effectively participate in or benefit from federally-assisted programs and activities may violate the prohibition under Title VI against discrimination on the basis of national origin. This part incorporates the Final Guidance to Federal Assistance Recipients Regarding Title VI Prohibition against National Origin Discrimination Affecting Limited English Proficient Persons, published January 22, 2007, in the *Federal Register*.

The PHA will take affirmative steps to communicate with people who need services or information in a language other than English. These persons will be referred to as Persons with Limited English Proficiency (LEP).

LEP persons are defined as persons who do not speak English as their primary language and who have a limited ability to read, write, speak or understand English. For the purposes of this Admissions and Continued Occupancy Policy, LEP persons are public housing applicants and resident families, and parents and family members of applicants and resident families.

In order to determine the level of access needed by LEP persons, the PHA will balance the following four factors: (1) the number or proportion of LEP persons eligible to be served or likely to be encountered by the public housing program; (2) the frequency with which LEP persons come into contact with the program; (3) the nature and importance of the program, activity, or service provided by the program to people's lives; and (4) the resources available to the PHA and costs. Balancing these four factors will ensure meaningful access by LEP persons to critical services while not imposing undue burdens on the PHA.

2-III.B. ORAL INTERPRETATION

The PHA will offer competent interpretation services free of charge, upon request, to the LEP person.

PHA Policy

Where LEP persons desire, they will be permitted to use, at their own expense, an interpreter of their own choosing, in place of or as a supplement to the free language services offered by the PHA. The interpreter may be a family member or friend.

The PHA will analyze the various kinds of contacts it has with the public, to assess language needs and decide what reasonable steps should be taken. "Reasonable steps" may not be reasonable where the costs imposed substantially exceed the benefits.

Where feasible and possible, the PHA will hire bilingual staff to be available to act as interpreters and translators.

2-III.C. WRITTEN TRANSLATION

Translation is the replacement of a written text from one language into an equivalent written text in another language.

PHA Policy

In order to comply with written-translation obligations, the PHA will take the following steps:

The PHA will provide written translations of vital documents for each eligible LEP language group that constitutes 5 percent or 1,000 persons, whichever is less, of the population of persons eligible to be served or likely to be affected or encountered. Translation of other documents, if needed, can be provided orally; or

2-III.D. IMPLEMENTATION PLAN

The PHA has determined that it is not necessary to develop a written implementation plan. The absence of a written plan does not obviate the underlying obligation to ensure meaningful access by LEP persons to the PHA's public housing program and services.

PHA Policy

It has been determined that the PHA serves few LEP persons, and the PHA has very limited resources.

EXHIBIT 2-1: DEFINITION OF A PERSON WITH A DISABILITY UNDER FEDERAL CIVIL RIGHTS LAWS [24 CFR Parts 8.3 and 100.201]

A person with a disability, as defined under federal civil rights laws, is any person who:

- Has a physical or mental impairment that substantially limits one or more of the major life activities of an individual, or
- Has a record of such impairment, or
- Is regarded as having such impairment

The phrase “physical or mental impairment” includes:

- Any physiological disorder or condition, cosmetic or disfigurement, or anatomical loss affecting one or more of the following body systems: neurological; musculoskeletal; special sense organs; respiratory, including speech organs; cardiovascular; reproductive; digestive; genito-urinary; hemic and lymphatic; skin; and endocrine; or
- Any mental or psychological disorder, such as mental retardation, organic brain syndrome, emotional or mental illness, and specific learning disabilities. The term “physical or mental impairment” includes, but is not limited to: such diseases and conditions as orthopedic, visual, speech and hearing impairments, cerebral palsy, autism, epilepsy, muscular dystrophy, multiple sclerosis, cancer, heart disease, diabetes, mental retardation, emotional illness, drug addiction and alcoholism.

“Major life activities” includes, but is not limited to, caring for oneself, performing manual tasks, walking, seeing, hearing, breathing, learning, and/or working.

“Has a record of such impairment” means has a history of, or has been misclassified as having, a mental or physical impairment that substantially limits one or more major live activities.

“Is regarded as having an impairment” is defined as having a physical or mental impairment that does not substantially limit one or more major life activities but is treated by a public entity (such as the PHA) as constituting such a limitation; has none of the impairments defined in this section but is treated by a public entity as having such an impairment; or has a physical or mental impairment that substantially limits one or more major life activities, only as a result of the attitudes of others toward that impairment.

The definition of a person with disabilities does not include:

- Current illegal drug users
- People whose alcohol use interferes with the rights of others
- Persons who objectively pose a direct threat or substantial risk of harm to others that cannot be controlled with a reasonable accommodation under the public housing program

The above definition of disability determines whether an applicant or participant is entitled to any of the protections of federal disability civil rights laws. Thus, a person who does not meet this definition of disability is not entitled to a reasonable accommodation under federal civil rights and fair housing laws and regulations.

The HUD definition of a person with a disability is much narrower than the civil rights definition of disability. The HUD definition of a person with a disability is used for purposes of receiving the disabled family preference, the \$400 elderly/disabled household deduction, the allowance for medical expenses, or the allowance for disability assistance expenses.

The definition of a person with a disability for purposes of granting a reasonable accommodation request is much broader than the HUD definition of disability. Many people will not qualify as a disabled person under the public housing program, yet an accommodation is needed to provide equal opportunity.

Chapter 3

ELIGIBILITY

INTRODUCTION

The PHA is responsible for ensuring that every individual and family admitted to the public housing program meets all program eligibility requirements. This includes any individual approved to join the family after the family has been admitted to the program. The family must provide any information needed by the PHA to confirm eligibility and determine the level of the family's assistance.

To be eligible for the public housing program:

- The applicant family must:
 - Qualify as a family as defined by HUD and the PHA.
 - Have income at or below HUD-specified income limits.
 - Qualify on the basis of citizenship or the eligible immigrant status of family members.
 - Provide social security number information for household members as required.
 - Consent to the PHA's collection and use of family information as provided for in PHA-provided consent forms.
- The PHA must determine that the current or past behavior of household members does not include activities that are prohibited by HUD or the PHA.

This chapter contains three parts:

Part I: Definitions of Family and Household Members. This part contains HUD and PHA definitions of family and household members and explains initial and ongoing eligibility issues related to these members.

Part II: Basic Eligibility Criteria. This part discusses income eligibility, and rules regarding citizenship, social security numbers, and family consent.

Part III: Denial of Admission. This part covers factors related to an applicant's past or current conduct (e.g. criminal activity) that can cause the PHA to deny admission.

PART I: DEFINITIONS OF FAMILY AND HOUSEHOLD MEMBERS

3-I.A. OVERVIEW

Some eligibility criteria and program rules vary depending upon the composition of the family requesting assistance. In addition, some requirements apply to the family as a whole and others apply to individual persons who will live in the public housing unit. This part provides information that is needed to correctly identify family and household members, and explains HUD's eligibility rules.

3-I.B. FAMILY AND HOUSEHOLD [24 CFR 5.105(a)(2), 24 CFR 5.403, FR Notice 02/03/12, and Notice PIH 2014-20]

The terms *family* and *household* have different meanings in the public housing program.

Family

To be eligible for admission, an applicant must qualify as a family. *Family* as defined by HUD, includes but is not limited to the following, regardless of actual or perceived sexual orientation, gender identity, or marital status, a single person, who may be an elderly person, disabled person, near-elderly person, or any other single person; or a group of persons residing together. Such group includes, but is not limited to a family with or without children (a child who is temporarily away from the home because of placement in foster care is considered a member of the family), an elderly family, a near-elderly family, a disabled family, a displaced family, or the remaining member of a tenant family. The PHA has the discretion to determine if any other group of persons qualifies as a family.

Gender Identity means actual or perceived gender characteristics.

Sexual orientation means homosexuality, heterosexuality, or bisexuality.

PHA Policy

A family also includes two or more individuals who are not related by blood, marriage, adoption, or other operation of law, but who either can demonstrate that they have lived together previously or certify that each individual's income and other resources will be available to meet the needs of the family.

Each family must identify the individuals to be included in the family at the time of application, and must update this information if the family's composition changes.

Household

Household is a broader term that includes additional people who, with the PHA's permission, live in a public housing unit, such as live-in aides, foster children, and foster adults.

3-I.C. FAMILY BREAKUP AND REMAINING MEMBER OF TENANT FAMILY

Family Breakup

Except under the following conditions, the PHA has discretion to determine which members of an assisted family continue to receive assistance if the family breaks up:

- If the family breakup results from an occurrence of domestic violence, dating violence, sexual assault, or stalking, the PHA must ensure that the victim retains assistance. (For documentation requirements and policies related to domestic violence, dating violence, sexual assault, and stalking, see section 16-VII.D of this plan.)
- If a court determines the disposition of property between members of the assisted family, the PHA is bound by the court's determination of which family members continue to receive assistance.

PHA Policy

When a family on the waiting list breaks up into two otherwise eligible families, only one of the new families may retain the original application date. Other former family members may submit a new application with a new application date if the waiting list is open.

If a family breaks up into two otherwise eligible families while living in public housing, only one of the new families will retain occupancy of the unit.

If a court determines the disposition of property between members of an applicant or resident family, the PHA will abide by the court's determination.

In the absence of a judicial decision or an agreement among the original family members, the PHA will determine which family will retain their placement on the waiting list or continue in occupancy. In making its determination, the PHA will take into consideration the following factors: (1) the interest of any minor children, including custody arrangements; (2) the interest of any ill, elderly, or disabled family members; (3) the interest of any family member who is or has been the victim of domestic violence, dating violence, sexual assault, or stalking, including a family member who was forced to leave a public housing unit as a result of such actual or threatened abuse, and provides documentation in accordance with section 16-VII.D of this ACOP; (4) any possible risks to family members as a result of criminal activity, and (5) the recommendations of social service professionals.

Remaining Member of a Tenant Family [24 CFR 5.403]

The HUD definition of family includes the *remaining member of a tenant family*, which is a member of a resident family who remains in the unit when other members of the family have left the unit [PH Occ GB, p. 26]. Household members such as live-in aides, foster children, and foster adults do not qualify as remaining members of a family.

If dependents are the only "remaining members of a tenant family" and there is no family member able to assume the responsibilities of the head of household, see Chapter 6, Section 6-I.B, for the policy on "Caretakers for a Child."

3-I.D. HEAD OF HOUSEHOLD [24 CFR 5.504(b)]

Head of household means the adult member of the family who is considered the head for purposes of determining income eligibility and rent. The head of household is responsible for ensuring that the family fulfills all of its responsibilities under the program, alone or in conjunction with a cohead or spouse.

PHA Policy

The family may designate any qualified family member as the head of household.

The head of household must have the legal capacity to enter into a lease under state and local law. A minor who is emancipated under state law may be designated as head of household.

3-I.E. SPOUSE, AND OTHER ADULT

Spouse means the marriage partner of the head of household.

PHA Policy

A *marriage partner* includes the partner in a "common law" marriage as defined in state law. The term "spouse" does not apply to friends, roommates, or significant others who are not marriage partners. A minor who is emancipated under state law may be designated as a spouse.

Other adult means a family member, other than the head, spouse, or cohead, who is 18 years of age or older. Foster adults and live-in aides are not considered other adults [HUD-50058 IB, p. 14].

3-I.F. DEPENDENT [24 CFR 5.603]

A *dependent* is a family member who is under 18 years of age or a person of any age who is a person with a disability or a full-time student, except that the following persons can never be dependents: the head of household, spouse, foster children/adults and live-in aides. Identifying each dependent in the family is important because each dependent qualifies the family for a deduction from annual income as described in Chapter 6.

Joint Custody of Dependents

PHA Policy

Dependents that are subject to a joint custody arrangement will be considered a member of the family, if they live with the applicant or resident family 50 percent or more of the time.

When more than one applicant or assisted family (regardless of program) are claiming the same dependents as family members, the family with primary custody at the time of the initial examination or reexamination will be able to claim the dependents. If there is a dispute about which family should claim them, the PHA will make the determination based on available documents such as court orders, an IRS income tax return showing which family has claimed the child for income tax purposes, school records, or other credible documentation.

3-I.G. FULL-TIME STUDENT [24 CFR 5.603]

A *full-time student* (FTS) is a person who is attending school or vocational training on a full-time basis. The time commitment or subject load that is needed to determine if attendance is full-time is defined by the educational institution.

Identifying each FTS is important because (1) each family member that is an FTS, other than the head, spouse, or cohead, qualifies the family for a dependent deduction and (2) the income of such an FTS is treated differently from the income of other family members.

3-I.H. ELDERLY AND NEAR-ELDERLY PERSONS, AND ELDERLY FAMILY [24 CFR 5.100, 5.403, 945.105, and FR Notice 02/03/12]

Elderly Persons

An *elderly person* is a person who is at least 62 years of age.

Near-Elderly Persons

A *near-elderly person* is a person who is 50-61 years of age.

Elderly Family

An *elderly family* is one in which the head, spouse, or sole member is an elderly person. Identifying elderly families is important because these families qualify for the elderly family allowance and the medical allowance as described in Chapter 6 and may qualify for a particular type of development as noted in Chapter 4.

3-I.I. PERSONS WITH DISABILITIES AND DISABLED FAMILY [24 CFR 5.403, FR Notice 02/03/12]

Persons with Disabilities

Under the public housing program, special rules apply to persons with disabilities and to any family whose head or spouse is a person with disabilities. The technical definitions of individual with handicaps and persons with disabilities are provided in Exhibit 3-1 at the end of this chapter. These definitions are used for a number of purposes including ensuring that persons with disabilities are not discriminated against based upon disability.

As discussed in Chapter 2, the PHA must make all aspects of the public housing program accessible to persons with disabilities and consider requests for reasonable accommodations when a person's disability limits their full access to the unit, the program, or the PHA's services.

Disabled Family

A *disabled family* is one in which the head or spouse is a person with disabilities. Identifying disabled families is important because these families qualify for the disabled family allowance and the medical allowance as described in Chapter 6 and may qualify for a particular type of development as noted in Chapter 4.

Even though persons with drug or alcohol dependencies are considered persons with disabilities for the purpose of non-discrimination, this does not prevent the PHA from denying admission or taking action under the lease for reasons related to alcohol and drug abuse in accordance with the policies found in Part III of this chapter and in Chapter 13.

3-I.J. GUESTS [24 CFR 5.100]

A *guest* is defined as a person temporarily staying in the unit with the consent of a tenant or other member of the household who has express or implied authority to so consent on behalf of the tenant.

The lease must provide that the tenant has the right to exclusive use and occupancy of the leased unit by the members of the household authorized to reside in the unit in accordance with the lease, including reasonable accommodation of their guests [24 CFR 966.4(d)]. The head of household is responsible for the conduct of visitors and guests, inside the unit as well as anywhere on or near PHA premises [24 CFR 966.4(f)].

PHA Policy

A resident family must notify the PHA when overnight guests will be staying in the unit for more than 3 days. A guest can remain in the unit no longer than 14 consecutive days or a total of 30 cumulative calendar days during any 12 month period.

A family may request an exception to this policy for valid reasons (e.g., care of a relative recovering from a medical procedure expected to last 20 consecutive days). An exception will not be made unless the family can identify and provide documentation of the residence to which the guest will return.

Children who are subject to a joint custody arrangement or for whom a family has visitation privileges, that are not included as a family member because they live outside of the public housing unit more than 50 percent of the time, are not subject to the time limitations of guests as described above.

Former residents who have been evicted are not permitted as overnight guests.

Guests who represent the public housing unit address as their residence address or address of record for receipt of benefits or any other purposes will be considered unauthorized occupants. In addition, guests who remain in the unit beyond the allowable time limit will be considered to be unauthorized occupants, and their presence constitutes violation of the lease.

3-I.K. FOSTER CHILDREN AND FOSTER ADULTS

Foster adults are usually persons with disabilities, unrelated to the tenant family, who are unable to live alone [24 CFR 5.609(c)(2)].

The term *foster child* is not specifically defined by the regulations.

Foster children and foster adults that are living with an applicant or resident family are considered household members but not family members. The income of foster children/adults is not counted in family annual income and foster children/adults do not qualify for a dependent deduction [24 CFR 5.603 and HUD-50058 IB, pp. 13-14].

PHA Policy

A foster child is a child that is in the legal guardianship or custody of a state, county, or private adoption or foster care agency, yet is cared for by foster parents in their own homes, under some kind of short-term or long-term foster care arrangement with the custodial agency.

Children that are temporarily absent from the home as a result of placement in foster care are discussed in Section 3-I.L.

3-I.L. ABSENT FAMILY MEMBERS

Individuals may be temporarily or permanently absent from the unit for a variety of reasons including educational activities, placement in foster care, employment, and illness.

Definitions of Temporarily and Permanently Absent

PHA Policy

Generally an individual who is or is expected to be absent from the public housing unit for 180 consecutive days or less is considered temporarily absent and continues to be considered a family member. Generally an individual who is or is expected to be absent from the public housing unit for more than 180 consecutive days is considered permanently absent and no longer a family member. Exceptions to this general policy are discussed below.

Absent Students

PHA Policy

When someone who has been considered a family member attends school away from home, the person will continue to be considered a family member unless information becomes available to the PHA indicating that the student has established a separate household or the family declares that the student has established a separate household.

Absences Due to Placement in Foster Care [24 CFR 5.403]

Children temporarily absent from the home as a result of placement in foster care are considered members of the family.

PHA Policy

If a child has been placed in foster care, the PHA will verify with the appropriate agency whether and when the child is expected to be returned to the home. Unless the agency confirms that the child has been permanently removed from the home, the child will be counted as a family member.

Absent Head or Spouse

PHA Policy

An employed head or spouse absent from the unit more than 180 consecutive days due to employment will continue to be considered a family member.

Individuals Confined for Medical Reasons

PHA Policy

An individual confined to a nursing home or hospital on a permanent basis is not considered a family member.

If there is a question about the status of a family member, the PHA will request verification from a medical doctor and will use this determination. If the medical doctor cannot provide a determination, the person generally will be considered temporarily absent. The family may present evidence that the family member is confined on a permanent basis and request that the person not be considered a family member.

Return of Permanently Absent Family Members

PHA Policy

The family must request PHA approval for the return of any adult family members that the PHA has determined to be permanently absent. The individual is subject to the eligibility and screening requirements discussed in this chapter.

3-I.M. LIVE-IN AIDE

Live-in aide means a person who resides with one or more elderly persons, or near-elderly persons, or persons with disabilities, and who: (1) is determined to be essential to the care and well-being of the person(s), (2) is not obligated for the support of the person(s), and (3) would not be living in the unit except to provide the necessary supportive services [24 CFR 5.403].

The PHA must approve a live-in aide if needed as a reasonable accommodation for a person with disabilities in accordance with 24 CFR 8.

A live-in aide is considered a household member but not a family member. The income of the live-in aide is not counted in determining the annual income of the family [24 CFR 5.609(c)(5)]. Relatives may be approved as live-in aides if they meet all of the criteria defining a live-in aide. However, a relative who serves as a live-in aide is not considered a family member and would not be considered a remaining member of a tenant family.

PHA Policy

A family's request for a live-in aide must be made in writing. The PHA will verify the need for a live-in aide with a medical doctor as provided by the family. For continued approval, the family must submit a new, written request, subject to PHA verification, at each annual reexamination.

In addition, the family and live-in aide will be required to submit a certification stating that the live-in aide is (1) not obligated for the support of the person(s) needing the care, and (2) would not be living in the unit except to provide the necessary supportive services.

The PHA has the discretion not to approve a particular person as a live-in aide, and may withdraw such approval, if [24 CFR 966.4(d)(3)(i)]:

The person commits fraud, bribery or any other corrupt or criminal act in connection with any federal housing program;

The person has a history of drug-related criminal activity or violent criminal activity; or

The person currently owes rent or other amounts to the PHA or to another PHA in connection with Section 8 or public housing assistance under the 1937 Act.

Within 10 business days of receiving a request for a live-in aide, including all required documentation related to the request, the PHA will notify the family of its decision in writing.

PART II: BASIC ELIGIBILITY CRITERIA

3-II.A. INCOME ELIGIBILITY AND TARGETING

Income Limits

HUD is required by law to establish income limits that determine the income eligibility of applicants for HUD's assisted housing programs, including the public housing program. The income limits are published annually and are based on HUD estimates of the median incomes for families of different sizes in a particular area or county.

Types of Low-Income Families [24 CFR 5.603(b)]

Low-income family. A family whose annual income does not exceed 80 percent of the median income for the area, adjusted for family size.

Very low-income family. A family whose annual income does not exceed 50 percent of the median income for the area, adjusted for family size.

Extremely low-income family. A family whose annual income does not exceed the federal poverty level or 30 percent of the median income for the area, whichever number is higher.

Area median income is determined by HUD, with adjustments for smaller and larger families. HUD may establish income ceilings higher or lower than 30, 50, or 80 percent of the median income for an area if HUD finds that such variations are necessary because of unusually high or low family incomes.

Using Income Limits for Eligibility [24 CFR 960.201]

Income limits are used for eligibility only at admission. Eligibility is established by comparing a family's annual income with HUD's published income limits. To be income eligible, the annual income of an applicant must be within the *low-income* limit.

Using Income Limits for Targeting [24 CFR 960.202(b)]

At least 40 percent of the families admitted from the PHA waiting list to the public housing program during a PHA fiscal year must be *extremely low-income* families. This is called the “basic targeting requirement.”

If admissions of extremely low-income families to the PHA’s housing choice voucher program during a PHA fiscal year exceed the 75 percent minimum targeting requirement for that program, such excess shall be credited against the PHA’s public housing basic targeting requirement for the same fiscal year.

The fiscal year credit for housing choice voucher program admissions that exceed the minimum voucher program targeting requirement must not exceed the lower of:

- Ten percent of public housing waiting list admissions during the PHA fiscal year
- Ten percent of waiting list admission to the PHA’s housing choice voucher program during the PHA fiscal year
- The number of qualifying low-income families who commence occupancy during the fiscal year of public housing units located in census tracts with a poverty rate of 30 percent or more. For this purpose, qualifying low-income family means a low-income family other than an extremely low-income family.

For discussion of how income targeting is used in tenant selection, see Chapter 4.

3-II.B. CITIZENSHIP OR ELIGIBLE IMMIGRATION STATUS [24 CFR 5, Subpart E]

Housing assistance is available only to individuals who are U.S. citizens, U.S. nationals (herein referred to as citizens and nationals), or noncitizens that have eligible immigration status. At least one family member must be a citizen, national, or noncitizen with eligible immigration status in order for the family to qualify for any level of assistance.

All applicant families must be notified of the requirement to submit evidence of their citizenship status when they apply. Where feasible, and in accordance with the PHA's Limited English Proficiency Plan, the notice must be in a language that is understood by the individual if the individual is not proficient in English.

Declaration [24 CFR 5.508]

HUD requires each family member to declare whether the individual is a citizen, a national, or an eligible noncitizen, except those members who elect not to contend that they have eligible immigration status. Those who elect not to contend their status are considered to be ineligible noncitizens. For citizens, nationals and eligible noncitizens the declaration must be signed personally by the head, spouse, cohead, and any other family member 18 or older, and by a parent or guardian for minors. The family must identify in writing any family members who elect not to contend their immigration status (see Ineligible Noncitizens below). No declaration is required for live-in aides, foster children, or foster adults.

U.S. Citizens and Nationals

In general, citizens and nationals are required to submit only a signed declaration that claims their status. However, HUD regulations permit the PHA to request additional documentation of their status, such as a passport.

PHA Policy

Family members who declare citizenship or national status will not be required to provide additional documentation unless the PHA receives information indicating that an individual's declaration may not be accurate.

Eligible Noncitizens

In addition to providing a signed declaration, those declaring eligible noncitizen status must sign a verification consent form and cooperate with PHA efforts to verify their immigration status as described in Chapter 7. The documentation required for establishing eligible noncitizen status varies depending upon factors such as the date the person entered the U.S., the conditions under which eligible immigration status has been granted, the person's age, and the date on which the family began receiving HUD-funded assistance.

Lawful residents of the Marshall Islands, the Federated States of Micronesia, and Palau, together known as the Freely Associated States, or FAS, are eligible for housing assistance under section 141 of the Compacts of Free Association between the U.S. Government and the Governments of the FAS [Public Law 106-504].

Ineligible Noncitizens

Those noncitizens who do not wish to contend their immigration status are required to have their names listed on a noncontending family members listing, signed by the head or spouse (regardless of citizenship status), indicating their ineligible immigration status. The PHA is not required to verify a family member's ineligible status and is not required to report an individual's unlawful presence in the U.S. to the United States Citizenship and Immigration Services (USCIS).

Providing housing assistance to noncitizen students is prohibited [24 CFR 5.522]. This prohibition extends to the noncitizen spouse of a noncitizen student as well as to minor children who accompany or follow to join the noncitizen student. Such prohibition does not extend to the citizen spouse of a noncitizen student or to the children of the citizen spouse and noncitizen student. Such a family is eligible for prorated assistance as a mixed family.

Mixed Families

A family is eligible for admission as long as at least one member is a citizen, national, or eligible noncitizen. Families that include eligible and ineligible individuals are considered *mixed families*. Such families will be given notice that their assistance will be prorated, and that they may request a hearing if they contest this determination. See Chapter 6 for a discussion of how rents are prorated, and Chapter 14 for a discussion of grievance hearing procedures.

Ineligible Families [24 CFR 5.514(d), (e), and (f)]

A PHA may elect to provide assistance to a family before the verification of the eligibility of the individual or one family member [24 CFR 5.512(b)]. Otherwise, no individual or family may be assisted prior to the affirmative establishment by the PHA that the individual or at least one family member is eligible [24 CFR 5.512(a)].

PHA Policy

The PHA will not provide assistance to a family before the verification of at least one family member as a citizen, national, or eligible noncitizen.

When a PHA determines that an applicant family does not include any citizens, nationals, or eligible noncitizens, following the verification process, the family will be sent a written notice within 10 business days of the determination.

The notice will explain the reasons for the denial of assistance and will advise the family of its right to request an appeal to the United States Citizenship and Immigration Services (USCIS), or to request a grievance hearing with the PHA. The grievance hearing with the PHA may be requested in lieu of the USCIS appeal, or at the conclusion of the USCIS appeal process. The notice must also inform the applicant family that assistance may not be delayed until the conclusion of the USCIS appeal process, but that it may be delayed pending the completion of the grievance hearing process.

Grievance hearing procedures are contained in Chapter 14.

Time Frame for Determination of Citizenship Status [24 CFR 5.508(g)]

For new occupants joining the resident family the PHA must verify status at the first interim or regular reexamination following the person's occupancy, whichever comes first.

If an individual qualifies for a time extension for the submission of required documents, the PHA must grant such an extension for no more than 30 days [24 CFR 5.508(h)].

Each family member is required to submit evidence of eligible status only one time during continuous occupancy.

PHA Policy

The PHA will verify the status of applicants at the time other eligibility factors are determined.

3-ILC. SOCIAL SECURITY NUMBERS [24 CFR 5.216 and 5.218, Notice PIH 2018-24]

The applicant and all members of the applicant's household must disclose the complete and accurate social security number (SSN) assigned to each household member, and the documentation necessary to verify each SSN. If a child under age 6 has been added to an applicant family within the 6 months prior to program admission, an otherwise eligible family may be admitted to the program and must disclose and document the child's SSN within 90 days of admission. A detailed discussion of acceptable documentation is provided in Chapter 7.

Note: These requirements do not apply to noncitizens who do not contend eligible immigration status.

In addition, each participant who has not previously disclosed an SSN, has previously disclosed an SSN that HUD or the SSA determined was invalid, or has been issued a new SSN must submit their complete and accurate SSN and the documentation required to verify the SSN at the time of the next interim or annual reexamination or recertification. Participants age 62 or older as of January 31, 2010, whose determination of eligibility was begun before January 31, 2010, are exempt from this requirement and remain exempt even if they move to a new assisted unit.

The PHA must deny assistance to an applicant family if they do not meet the SSN disclosure and documentation requirements contained in 24 CFR 5.216.

3-II.D. FAMILY CONSENT TO RELEASE OF INFORMATION [24 CFR 5.230]

HUD requires each adult family member, and the head of household and spouse regardless of age, to sign form HUD-9886, Authorization for the Release of Information Privacy Act Notice, and other consent forms as needed to collect information relevant to the family's eligibility and level of assistance. Chapter 7 provides detailed information concerning the consent forms and verification requirements.

The PHA must deny admission to the program if any member of the applicant family fails to sign and submit consent forms which allow the PHA to obtain information that the PHA has determined is necessary in administration of the public housing program [24 CFR 960.259(a) and (b)].

PART III: DENIAL OF ADMISSION

3-III.A. OVERVIEW

A family that does not meet the eligibility criteria discussed in Parts I and II must be denied admission.

In addition, HUD requires or permits the PHA to deny admission based on certain types of current or past behaviors of family members as discussed in this part. The PHA's authority in this area is limited by the Violence against Women Act of 2013 (VAWA), which expressly prohibits the denial of admission to an otherwise qualified applicant on the basis that the applicant is or has been the victim of domestic violence, dating violence, sexual assault, or stalking [24 CFR 5.2005(b)].

This part covers the following topics:

- Required denial of admission
- Other permitted reasons for denial of admission
- Screening
- Criteria for deciding to deny admission
- Prohibition against denial of admission to victims of domestic violence, dating violence, sexual assault, or stalking
- Notice of eligibility or denial

3-III.B. REQUIRED DENIAL OF ADMISSION [24 CFR 960.204]

PHAs are required to establish standards that prohibit admission of an applicant to the public housing program if they have engaged in certain criminal activity or if the PHA has reasonable cause to believe that a household member's current use or pattern of use of illegal drugs, or current abuse or pattern of abuse of alcohol may threaten the health, safety, or right to peaceful enjoyment of the premises by other residents.

Where the statute requires that the PHA prohibit admission for a prescribed period of time after some disqualifying behavior or event, the PHA may choose to continue that prohibition for a longer period of time [24 CFR 960.203(c)(3)(ii)].

HUD requires the PHA to deny assistance in the following cases:

- Any member of the household has been evicted from federally-assisted housing in the last 3 years for drug-related criminal activity.

PHA Policy

The PHA will not admit an otherwise-eligible family who was evicted from federally-assisted housing within the past 3 years for drug-related criminal activity.

The PHA determines that any household member is currently engaged in the use of illegal drugs. *Drug* means a controlled substance as defined in section 102 of the Controlled Substances Act [21 U.S.C. 802]. *Currently engaged in the illegal use of a drug* means a person has engaged in the behavior recently enough to justify a reasonable belief that there is continuing illegal drug use by a household member [24 CFR 960.205(b)(1)].

PHA Policy

Currently engaged in is defined as any use of illegal drugs during the previous six months.

- The PHA has reasonable cause to believe that any household member's current use or pattern of use of illegal drugs, or current abuse or pattern of abuse of alcohol, may threaten the health, safety, or right to peaceful enjoyment of the premises by other residents.

PHA Policy

In determining reasonable cause, the PHA will consider all credible evidence, including but not limited to, any record of convictions, arrests, or evictions of household members related to the use of illegal drugs or the abuse of alcohol. A conviction will be given more weight than an arrest. Any household member has ever been convicted of drug-related criminal activity for the production or manufacture of methamphetamine on the premises of federally assisted housing.

- Any household member is subject to a lifetime registration requirement under a state sex offender registration program.

3-III.C. OTHER PERMITTED REASONS FOR DENIAL OF ADMISSION

HUD permits, but does not require the PHA to deny admission for the reasons discussed in this section.

Criminal Activity [24 CFR 960.203(c)]

The PHA is responsible for screening family behavior and suitability for tenancy. In doing so, the PHA may consider an applicant's history of criminal activity involving crimes of physical violence to persons or property and other criminal acts which would adversely affect the health, safety, or welfare of other tenants.

PHA Policy

If any household member is currently engaged in, or has engaged in any of the following criminal activities, within the past five years, the family will be denied admission.

Drug-related criminal activity, defined by HUD as the illegal manufacture, sale, distribution, or use of a drug, or the possession of a drug with intent to manufacture, sell, distribute or use the drug [24 CFR 5.100].

Violent criminal activity, defined by HUD as any criminal activity that has as one of its elements the use, attempted use, or threatened use of physical force substantial enough to cause, or be reasonably likely to cause, serious bodily injury or property damage [24 CFR 5.100].

Criminal activity that may threaten the health, safety, or welfare of other tenants [24 CFR 960.203(c)(3)].

Criminal activity that may threaten the health or safety of PHA staff, contractors, subcontractors, or agents.

Criminal sexual conduct, including but not limited to sexual assault, incest, open and gross lewdness, or child abuse.

Evidence of such criminal activity includes, but is not limited to any record of convictions, arrests, or evictions for suspected drug-related or violent criminal activity of household members within the past 5 years. A conviction for such activity will be given more weight than an arrest or an eviction.

In making its decision to deny assistance, the PHA will consider the factors discussed in Sections 3-III.E and 3-III.F. Upon consideration of such factors, the PHA may, on a case-by-case basis, decide not to deny assistance.

Previous Behavior [960.203(c) and (d) and PH Occ GB, p. 48]

HUD authorizes the PHA to deny admission based on relevant information pertaining to the family's previous behavior and suitability for tenancy.

In the event of the receipt of unfavorable information with respect to an applicant, the PHA must consider the time, nature, and extent of the applicant's conduct (including the seriousness of the offense). As discussed in Section 3-III.F, the PHA may also need to consider whether the cause of the unfavorable information may be that the applicant is the victim of domestic violence, dating violence, sexual assault, or stalking.

PHA Policy

The PHA will deny admission to an applicant family if the PHA determines that the family:

Has a pattern of unsuitable past performance in meeting financial obligations, including rent within the past five years

Has a pattern of disturbance of neighbors, destruction of property, or living or housekeeping habits at prior residences within the past five years which may adversely affect the health, safety, or welfare of other tenants

Has a pattern of eviction from housing or termination from residential programs within the past five years (considering relevant circumstances)

Owes rent or other amounts to this or any other PHA or owner in connection with any assisted housing program

Misrepresented or does not provide complete information related to eligibility, including income, award of preferences for admission, expenses, family composition or rent

Has committed fraud, bribery, or any other corrupt or criminal act in connection with any federal housing program

Has engaged in or threatened violent or abusive behavior toward PHA personnel

Abusive or violent behavior towards PHA personnel includes verbal as well as physical abuse or violence. Use of racial epithets, or other language, written or oral, that is customarily used to intimidate may be considered abusive or violent behavior.

Threatening refers to oral or written threats or physical gestures that communicate intent to abuse or commit violence.

In making its decision to deny admission, the PHA will consider the factors discussed in Sections 3-III.E and 3-III.F. Upon consideration of such factors, the PHA may, on a case-by-case basis, decide not to deny admission.

The PHA will consider the existence of mitigating factors, such as loss of employment or other financial difficulties, before denying admission to an applicant based on the failure to meet prior financial obligations.

3-III.D. SCREENING

Screening for Eligibility

PHAs are authorized to obtain criminal conviction records from law enforcement agencies to screen applicants for admission to the public housing program. This authority assists the PHA in complying with HUD requirements and PHA policies to deny assistance to applicants who are engaging in or have engaged in certain criminal activities. In order to obtain access to the records the PHA must require every applicant family to submit a consent form signed by each adult household member [24 CFR 5.903].

The PHA may not pass along to the applicant the costs of a criminal records check [24 CFR 960.204(d)].

PHA Policy

The PHA will perform criminal background checks through local law enforcement for all adult household members.

PHAs are required to perform criminal background checks necessary to determine whether any household member is subject to a lifetime registration requirement under a state sex offender program in the state where the housing is located, as well as in any other state where a household member is known to have resided [24 CFR 960.204(a)(4)].

PHA Policy

The PHA will use the Dru Sjodin National Sex Offender database to screen applicants for admission.

Additionally, PHAs must ask whether the applicant, or any member of the applicant's household, is subject to a lifetime registered sex offender registration requirement in any state [Notice PIH 2012-28].

If the PHA proposes to deny admission based on a criminal record or on lifetime sex offender registration information, the PHA must notify the household of the proposed action and must provide the subject of the record and the applicant a copy of the record and an opportunity to dispute the accuracy and relevance of the information prior to a denial of admission [24 CFR 5.903(f) and 5.905(d)].

Screening for Suitability as a Tenant [24 CFR 960.203(c)]

The PHA is responsible for the screening and selection of families to occupy public housing units. The PHA may consider all relevant information. Screening is important to public housing communities and program integrity, and to ensure that assisted housing is provided to those families that will adhere to lease obligations.

PHA Policy

The PHA will consider the family's history with respect to the following factors:

Payment of rent and utilities

Caring for a unit and premises

Respecting the rights of other residents to the peaceful enjoyment of their housing

Criminal activity that is a threat to the health, safety, or property of others

Behavior of all household members as related to the grounds for denial as detailed in Sections 3-III. B and C

Compliance with any other essential conditions of tenancy

Resources Used to Check Applicant Suitability [PH Occ GB, pp. 47-56]

PHAs have a variety of resources available to them for determination of the suitability of applicants. Generally, PHAs should reject applicants who have recent behavior that would warrant lease termination for a public housing resident.

PHA Policy

In order to determine the suitability of applicants the PHA will examine applicant history for the past five years. Such background checks will include:

Past Performance in Meeting Financial Obligations, Especially Rent

PHA and landlord references for the past five years, gathering information about past performance meeting rental obligations such as rent payment record, late payment record, whether the PHA/landlord ever began or completed lease termination for non-payment, and whether utilities were ever disconnected in the unit. PHAs and landlords will be asked if they would rent to the applicant family again.

Utility company references covering the monthly amount of utilities, late payment, disconnection, return of a utility deposit and whether the applicant can get utilities turned on in his/her name. (Use of this inquiry will be reserved for applicants applying for units where there are tenant-paid utilities.)

If an applicant has no rental payment history the PHA will check court records of eviction actions and other financial judgments, and credit reports. A lack of credit history will not disqualify someone from becoming a public housing resident, but a poor credit rating may.

Applicants with no rental payment history will also be asked to provide the PHA with personal references. The references will be requested to complete a verification of the applicant's ability to pay rent if no other documentation of ability to meet financial obligations is available. The applicant will also be required to complete a checklist documenting their ability to meet financial obligations.

If previous landlords or the utility company do not respond to requests from the PHA, the applicant may provide other documentation that demonstrates their ability to meet financial obligations (e.g. rent receipts, cancelled checks, etc.)

Disturbances of Neighbors, Destruction of Property or Living or Housekeeping Habits at Prior Residences that May Adversely Affect Health, Safety, or Welfare of Other Tenants, or Cause Damage to the Unit or the Development

PHA and landlord references for the past five years, gathering information on whether the applicant kept a unit clean, safe and sanitary; whether they violated health or safety codes; whether any damage was done by the applicant to a current or previous unit or the development, and, if so, how much the repair of the damage cost; whether the applicant's housekeeping caused insect or rodent infestation; and whether the neighbors complained about the applicant or whether the police were ever called because of disturbances.

Police and court records within the past five years will be used to check for any evidence of disturbance of neighbors or destruction of property that might have resulted in arrest or conviction. A record of arrest(s) will not be used as the basis for the denial or proof that the applicant engaged in disqualifying activity.

A personal reference will be requested to complete a verification of the applicant's ability to care for the unit and avoid disturbing neighbors if no other documentation is available. In these cases, the applicant will also be required to complete a checklist documenting their ability to care for the unit and to avoid disturbing neighbors.

Home visits may be used to determine the applicant's ability to care for the unit.

3-III.E. CRITERIA FOR DECIDING TO DENY ADMISSION

Evidence

PHA Policy

The PHA will use the preponderance of the evidence as the standard for making all admission decisions.

Preponderance of the evidence is defined as evidence which is of greater weight or more convincing than the evidence which is offered in opposition to it; that is, evidence which as a whole shows that the fact sought to be proved is more probable than not.

Preponderance of the evidence may not be determined by the number of witnesses, but by the greater weight of all evidence.

Consideration of Circumstances [24 CFR 960.203(c)(3) and (d)]

HUD authorizes the PHA to consider all relevant circumstances when deciding whether to deny admission based on a family's past history except in the situations for which denial of admission is mandated (see Section 3-III.B).

In the event the PHA receives unfavorable information with respect to an applicant, consideration must be given to the time, nature, and extent of the applicant's conduct (including the seriousness of the offense). In a manner consistent with its policies, PHAs may give consideration to factors which might indicate a reasonable probability of favorable future conduct.

PHA Policy

The PHA will consider the following facts and circumstances prior to making its decision:

The seriousness of the case, especially with respect to how it would affect other residents' safety or property

The effects that denial of admission may have on other members of the family who were not involved in the action or failure to act

The extent of participation or culpability of individual family members, including whether the culpable family member is a minor or a person with disabilities, or (as discussed further in section 3-III.F) a victim of domestic violence, dating violence, sexual assault, or stalking

The length of time since the violation occurred, including the age of the individual at the time of the conduct, as well as the family's recent history and the likelihood of favorable conduct in the future

While a record of arrest(s) will not be used as the sole basis for denial, an arrest may, however, trigger an investigation to determine whether the applicant actually engaged in disqualifying criminal activity. As part of its investigation, the PHA may obtain the police report associated with the arrest and consider the reported circumstances of the arrest. The PHA may also consider:

Any statements made by witnesses or the applicant not included in the police report

Whether criminal charges were filed

Whether, if filed, criminal charges were abandoned, dismissed, not prosecuted, or ultimately resulted in an acquittal

Any other evidence relevant to determining whether or not the applicant engaged in disqualifying activity

Evidence of criminal conduct will be considered if it indicates a demonstrable risk to safety and/or property

Evidence of the applicant family's participation in or willingness to participate in social service or other appropriate counseling service programs

Removal of a Family Member's Name from the Application

Should the PHA's screening process reveal that an applicant's household includes an individual subject to state lifetime registered sex offender registration, the PHA must offer the family the opportunity to remove the ineligible family member from the household. If the family is unwilling to remove that individual from the household, the PHA must deny admission to the family [Notice PIH 2012-28].

For other criminal activity, the PHA may permit the family to exclude the culpable family members as a condition of eligibility. [24 CFR 960.203(c)(3)(i)].

PHA Policy

As a condition of receiving assistance, a family may agree to remove the culpable family member from the application. In such instances, the head of household must certify that the family member will not be permitted to visit or to stay as a guest in the public housing unit.

After admission to the program, the family must present evidence of the former family member's current address upon PHA request.

Reasonable Accommodation [PH Occ GB, pp. 58-60]

If the family includes a person with disabilities, the PHA's decision concerning denial of admission is subject to consideration of reasonable accommodation in accordance with 24 CFR Part 8.

PHA Policy

If the family indicates that the behavior of a family member with a disability is the reason for the proposed denial of admission, the PHA will determine whether the behavior is related to the disability. If so, upon the family's request, the PHA will determine whether alternative measures are appropriate as a reasonable accommodation. The PHA will only consider accommodations that can reasonably be expected to address the behavior that is the basis of the proposed denial of admission. See Chapter 2 for a discussion of reasonable accommodation.

3-III.F. PROHIBITION AGAINST DENIAL OF ASSISTANCE TO VICTIMS OF DOMESTIC VIOLENCE, DATING VIOLENCE, SEXUAL ASSAULT, OR STALKING

The Violence against Women Act of 2013 (VAWA) and the HUD regulation at 24 CFR 5.2005(b) prohibit PHAs from denying admission to an otherwise qualified applicant on the basis that the applicant is or has been a victim of domestic violence, dating violence, sexual assault, or stalking.

Definitions of key terms used in VAWA are provided in section 16-VII of this ACOP, where general VAWA requirements and policies pertaining to notification, documentation, and confidentiality are also located.

Notification

VAWA 2013 expanded notification requirements to include the obligation for PHAs to provide applicants who are denied assistance with a notice of VAWA rights and the form HUD-50066 at the time the applicant is denied.

PHA Policy

The PHA acknowledges that a victim of domestic violence, dating violence, sexual assault, or stalking may have an unfavorable history (e.g., a poor credit history, a record of previous damage to an apartment, a prior arrest record) that would warrant denial under the PHA's policies. Therefore, if the PHA makes a determination to deny admission to an applicant family, the PHA will include in its notice of denial information about the protection against denial provided by VAWA in accordance with section 16-VII.C of this ACOP, a notice of VAWA rights, and a copy of the form HUD-50066. The PHA will request in writing that an applicant wishing to claim this protection notify the PHA within 10 business days.

Documentation

Victim Documentation [24 CFR 5.2007]

PHA Policy

If an applicant claims the protection against denial of admission that VAWA provides to victims of domestic violence, dating violence, sexual assault, or stalking, the PHA will request in writing that the applicant provide documentation supporting the claim in accordance with section 16-VII.D of this ACOP.

Perpetrator Documentation

PHA Policy

If the perpetrator of the abuse is a member of the applicant family, the applicant must provide additional documentation consisting of one of the following:

A signed statement (1) requesting that the perpetrator be removed from the application and (2) certifying that the perpetrator will not be permitted to visit or to stay as a guest in the public housing unit

Documentation that the perpetrator has successfully completed, or is successfully undergoing, rehabilitation or treatment. The documentation must be signed by an employee or agent of a domestic violence service provider or by a medical or other knowledgeable professional from whom the perpetrator has sought or is receiving assistance in addressing the abuse. The signer must attest under penalty of perjury to his or her belief that the rehabilitation was successfully completed or is progressing successfully. The victim and perpetrator must also sign or attest to the documentation.

3-III.G. NOTICE OF ELIGIBILITY OR DENIAL

The PHA will notify an applicant family of its final determination of eligibility in accordance with the policies in Section 4-III.E.

If a PHA uses a criminal record or sex offender registration information obtained under 24 CFR 5, Subpart J, as the basis of a denial, a copy of the record must precede the notice to deny, with an opportunity for the applicant to dispute the accuracy and relevance of the information before the PHA can move to deny the application. In addition, a copy of the record must be provided to the subject of the record [24 CFR 5.903(f) and 5.905(d)].

PHA Policy

If, based on a criminal record or sex offender registration information an applicant family appears to be ineligible, the PHA will notify the family in writing of the proposed denial and provide a copy of the record to the applicant and to the subject of the record. The family will be given 10 business days to dispute the accuracy and relevance of the information. If the family does not contact the PHA to dispute the information within that 10 day period, the PHA will proceed with issuing the notice of denial of admission. A family that does not exercise their right to dispute the accuracy of the information prior to issuance of the official denial letter will still be given the opportunity to do so as part of the informal hearing process.

Notice requirements related to denying admission to noncitizens are contained in Section 3-II.B.

Notice policies related to denying admission to applicants who may be victims of domestic violence, dating violence, sexual assault, or stalking are contained in Section 3-III.F.

EXHIBIT 3-1: DETAILED DEFINITIONS RELATED TO DISABILITIES

Person with Disabilities [24 CFR 5.403]

The term *person with disabilities* means a person who has any of the following types of conditions.

- Has a disability, as defined in 42 U.S.C. Section 423(d)(1)(A), which reads:

Inability to engage in any substantial gainful activity by reason of any medically determinable physical or mental impairment which can be expected to result in death or which has lasted or can be expected to last for a continuous period of not less than 12 months

In the case of an individual who has attained the age of 55 and is blind (within the meaning of “blindness” as defined in section 416(i)(1) of this title), inability by reason of such blindness to engage in substantial gainful activity, requiring skills or ability comparable to those of any gainful activity in which he has previously engaged with some regularity and over a substantial period of time.
- Has a developmental disability as defined in the Developmental Disabilities Assistance and Bill of Rights Act of 2000 [42 U.S.C.15002(8)], which defines developmental disability in functional terms as follows:

(A) IN GENERAL – The term *developmental disability* means a severe, chronic disability of an individual that-

 - (i) is attributable to a mental or physical impairment or combination of mental and physical impairments;
 - (ii) is manifested before the individual attains age 22;
 - (iii) is likely to continue indefinitely;
 - (iv) results in substantial functional limitations in 3 or more of the following areas of major life activity: (I) self-care, (II) receptive and expressive language, (III) learning, (IV) mobility, (V) self-direction, (VI) capacity for independent living, (VII) economic self-sufficiency; and
 - (v) reflects the individual’s need for a combination and sequence of special, interdisciplinary, or generic services, individualized supports, or other forms of assistance that are of lifelong or extended duration and are individually planned and coordinated.

(B) INFANTS AND YOUNG CHILDREN – An individual from birth to age 9, inclusive, who has a substantial developmental delay or specific congenital or acquired condition, may be considered to have a developmental disability without meeting 3 or more of the criteria described in clauses (i) through (v) of subparagraph (A) if the individual, without services and supports, has a high probability of meeting those criteria later in life.
- Has a physical, mental, or emotional impairment that is expected to be of long-continued and indefinite duration; substantially impedes his or her ability to live independently, and is of such a nature that the ability to live independently could be improved by more suitable housing conditions.

People with the acquired immunodeficiency syndrome (AIDS) or any conditions arising from the etiologic agent for AIDS are not excluded from this definition.

A person whose disability is based solely on any drug or alcohol dependence does not qualify as a person with disabilities for the purposes of this program.

For purposes of reasonable accommodation and program accessibility for persons with disabilities, the term person with disabilities refers to an individual with handicaps.

Individual with Handicaps [24 CFR 8.3]

Individual with handicaps means any person who has a physical or mental impairment that substantially limits one or more major life activities; has a record of such an impairment; or is regarded as having such an impairment. The term does not include any individual who is an alcoholic or drug abuser whose current use of alcohol or drugs prevents the individual from participating in the program or activity in question, or whose participation, by reason of such current alcohol or drug abuse, would constitute a direct threat to property or the safety of others. As used in this definition, the phrase:

- (1) Physical or mental impairment includes:
 - (a) Any physiological disorder or condition, cosmetic disfigurement, or anatomical loss affecting one or more of the following body systems: neurological; musculoskeletal; special sense organs; respiratory, including speech organs; cardiovascular; reproductive; digestive; genito-urinary; hemic and lymphatic; skin; and endocrine
 - (b) Any mental or psychological disorder, such as mental retardation, organic brain syndrome, emotional or mental illness, and specific learning disabilities. The term physical or mental impairment includes, but is not limited to, such diseases and conditions as orthopedic, visual, speech and hearing impairments, cerebral palsy, autism, epilepsy, muscular dystrophy, multiple sclerosis, cancer, heart disease, diabetes, mental retardation, emotional illness, drug addiction and alcoholism.
- (2) Major life activities means functions such as caring for one's self, performing manual tasks, walking, seeing, hearing, speaking, breathing, learning and working.
- (3) Has a record of such an impairment means has a history of, or has been misclassified as having, a mental or physical impairment that substantially limits one or more major life activities.
- (4) Is regarded as having an impairment means:
 - (a) Has a physical or mental impairment that does not substantially limit one or more major life activities but that is treated by a recipient as constituting such a limitation
 - (b) Has a physical or mental impairment that substantially limits one or more major life activities only as a result of the attitudes of others toward such impairment
 - (c) Has none of the impairments defined in paragraph (a) of this section but is treated by a recipient as having such an impairment

Chapter 4

APPLICATIONS, WAITING LIST AND TENANT SELECTION

INTRODUCTION

When a family wishes to reside in public housing, the family must submit an application that provides the PHA with the information needed to determine the family's eligibility. HUD requires the PHA to place all eligible families that apply for public housing on a waiting list. When a unit becomes available, the PHA must select families from the waiting list in accordance with HUD requirements and PHA policies as stated in its Admissions and Continued Occupancy Policy (ACOP) and its annual plan.

The PHA is required to adopt a clear approach to accepting applications, placing families on the waiting list, and selecting families from the waiting list, and must follow this approach consistently. The actual order in which families are selected from the waiting list can be affected if a family has certain characteristics designated by HUD or the PHA to receive preferential treatment.

HUD regulations require that the PHA comply with all equal opportunity requirements and it must affirmatively further fair housing goals in the administration of the program [24 CFR 960.103, PH Occ GB p. 13]. Adherence to the selection policies described in this chapter ensures that the PHA will be in compliance with all relevant fair housing requirements, as described in Chapter 2.

This chapter describes HUD and PHA policies for accepting applications, managing the waiting list and selecting families from the waiting list. The PHA's policies for assigning unit size and making unit offers are contained in Chapter 5. Together, Chapters 4 and 5 of the ACOP comprise the PHA's Tenant Selection and Assignment Plan (TSAP).

The policies outlined in this chapter are organized into three sections, as follows:

Part I: The Application Process. This part provides an overview of the application process, and discusses how applicants can obtain and submit applications. It also specifies how the PHA will handle the applications it receives.

Part II: Managing the Waiting List. This part presents the policies that govern how the PHA's waiting list is structured, when it is opened and closed, and how the public is notified of the opportunity to apply for public housing. It also discusses the process the PHA will use to keep the waiting list current.

Part III: Tenant Selection. This part describes the policies that guide the PHA in selecting families from the waiting list as units become available. It also specifies how in-person interviews will be used to ensure that the PHA has the information needed to make a final eligibility determination.

PART I: THE APPLICATION PROCESS

4-I.A. OVERVIEW

This part describes the policies that guide the PHA's efforts to distribute and accept applications, and to make preliminary determinations of applicant family eligibility that affect placement of the family on the waiting list. This part also describes the PHA's obligation to ensure the accessibility of the application process.

4-I.B. APPLYING FOR ASSISTANCE

Any family that wishes to reside in public housing must apply for admission to the program [24 CFR 1.4(b)(2)(ii), 24 CFR 960.202(a)(2)(iv), and PH Occ GB, p. 68]. HUD permits the PHA to determine the format and content of its applications, as well how such applications will be made available to interested families and how applications will be accepted by the PHA. However, the PHA must include Form HUD-92006, Supplement to Application for Federally Assisted Housing, as part of the PHA's application [Notice PIH 2009-36].

PHA Policy

Depending upon the length of time between the date of application and the availability of housing, the PHA may use a one- or two-step application process.

A two-step process will be used when it is expected that a family will not be selected from the waiting list for at least 60 days from the date of application. Under the two-step application process, the PHA initially will require families to provide only the information needed to make an initial assessment of the family's eligibility, and to determine the family's placement on the waiting list. The family will be required to provide all of the information necessary to establish family eligibility and the amount of rent the family will pay when selected from the waiting list.

Families may obtain application forms from the PHA's office during normal business hours when the waiting list is open.

Completed applications must be returned to the PHA by mail. Applications must be filled out completely in order to be accepted by the PHA for processing. If an application is incomplete, the PHA will notify the family of the additional information required.

4-I.C. ACCESSIBILITY OF THE APPLICATION PROCESS

The PHA must take a variety of steps to ensure that the application process is accessible to those people who might have difficulty complying with the standard PHA application process.

Disabled Populations [24 CFR 8; PH Occ GB, p. 68]

The PHA must provide reasonable accommodation as needed for persons with disabilities to make the application process fully accessible. The facility where applications are accepted and the application process must be fully accessible, or the PHA must provide an alternate approach that provides equal access to the program. Chapter 2 provides a full discussion of the PHA's policies related to providing reasonable accommodations for people with disabilities.

Limited English Proficiency

PHAs are required to take reasonable steps to ensure meaningful access to their programs and activities by persons with limited English proficiency [24 CFR 1]. Chapter 2 provides a full discussion on the PHA's policies related to ensuring access to people with limited English proficiency (LEP).

4-I.D. PLACEMENT ON THE WAITING LIST

The PHA must review each completed application received and make a preliminary assessment of the family's eligibility. Applicants for whom the waiting list is open must be placed on the waiting list unless the PHA determines the family to be ineligible. Where the family is determined to be ineligible, the PHA must notify the family in writing [24 CFR 960.208(a); PH Occ GB, p. 41].

No applicant has a right or entitlement to be listed on the waiting list, or to any particular position on the waiting list.

Ineligible for Placement on the Waiting List

PHA Policy

If the PHA determines from the information provided that a family is ineligible, the family will not be placed on the waiting list. When a family is determined to be ineligible, the PHA will send written notification of the ineligibility determination within 10 business days of receipt of the completed application. The notice will specify the reasons for ineligibility, and will inform the family of its right to request an informal hearing and explain the process for doing so (see Chapter 14).

Eligible for Placement on the Waiting List

PHA Policy

The PHA will send written notification of the preliminary eligibility determination within 10 business days of receiving a completed application. If applicable, the notice will also indicate the waiting list preference(s) for which the family appears to qualify.

Applicants will be placed on the waiting list according to PHA preference(s) and the date and time their complete application is received by the PHA.

The PHA will assign families on the waiting list according to the bedroom size for which a family qualifies as established in its occupancy standards (see Chapter 5). Families may request to be placed on the waiting list for a unit size smaller than designated by the occupancy guidelines (as long as the unit is not overcrowded according to PHA standards and local codes). However, in these cases, the family must agree not to request a transfer for two years after admission, unless they have a change in family size or composition.

Placement on the waiting list does not indicate that the family is, in fact, eligible for admission. When the family is selected from the waiting list, the PHA will verify any preference(s) claimed and determine eligibility and suitability for admission to the program.

Lottery Procedure

PHA Policy

Applicants will be placed on the waiting list according to lottery order. The lottery will follow the procedure below:

- Applicants will be notified in the advertisement opening the waiting list that selection of applications for a position on the waiting list will be by means of a lottery.
- Applications will be date-stamped and safeguarded unopened until the time for the receipt of applications has passed.
- After that time, applications will be placed in a container and randomly selected one by one by a PHA employee.
- There will be at least three persons present t the lottery, each of whom will certify in writing that the application slection was done in accordance with this procedure.
- Applications will be opened as each is selected and will be assigned the next position in order on the waiting list for the asset management project specified in the application.
- A master list of the selected applications will be kept recording the name of the applicant and the order in which the application was opened.

PART II: MANAGING THE WAITING LIST

4-II.A. OVERVIEW

The PHA must have policies regarding the type of waiting list it will utilize as well as how the waiting list will be organized and managed. This includes policies on notifying the public on the opening and closing of the waiting list to new applicants, updating family information, purging the list of families that are no longer interested in or eligible for public housing, and conducting outreach to ensure a sufficient number of applicants.

In addition, HUD imposes requirements on how the PHA may structure its waiting list and how families must be treated if they apply for public housing at a PHA that administers more than one assisted housing program.

4-II.B. ORGANIZATION OF THE WAITING LIST

The PHA's public housing waiting list must be organized in such a manner to allow the PHA to accurately identify and select families in the proper order, according to the admissions policies described in this ACOP.

PHA Policy

The waiting list will contain the following information for each applicant listed:

Name and social security number of head of household

Unit size required (number of family members)

Amount and source of annual income

Accessibility requirement, if any

Date and time of application or application number

Household type (family, elderly, disabled)

Race and ethnicity of the head of household

The PHA may adopt one community-wide waiting list or site-based waiting lists. The PHA must obtain approval from HUD through submission of its Annual Plan before it may offer site-based waiting lists. Site-based waiting lists allow families to select the development where they wish to reside and must be consistent with all applicable civil rights and fair housing laws and regulations [24 CFR 903.7(b)(2)].

PHA Policy

The PHA will maintain one single community-wide waiting list for its developments. Within the list, the PHA will designate subparts to easily identify who should be offered the next available unit (i.e. mixed populations, general occupancy, unit size, and accessible units).

The PHA will not adopt site-based waiting lists.

HUD requires that public housing applicants must be offered the opportunity to be placed on the waiting list for any tenant-based or project-based voucher or moderate rehabilitation program that the PHA operates if 1) the other programs' waiting lists are open, and 2) the family is qualified for the other programs [24 CFR 982.205(a)(2)(i)].

PHA Policy

The PHA will not merge the public housing waiting list with the waiting list for any other program the PHA operates.

4-II.C. OPENING AND CLOSING THE WAITING LIST

Closing the Waiting List

The PHA is permitted to close the waiting list, in whole or in part, if it has an adequate pool of families to fully lease units in all of its developments. The PHA may close the waiting list completely, or restrict intake by preference, type of project, or by size and type of dwelling unit. [PH Occ GB, p. 31].

PHA Policy

The PHA will close the waiting list after the time identified in the advertisement opening the list. Where the PHA has particular preferences or other criteria that require a specific category of family, the PHA may elect to continue to accept applications from these applicants while closing the waiting list to others.

Reopening the Waiting List

If the waiting list has been closed, it may be reopened at any time. The PHA should publish a notice announcing the opening of the waiting list in local newspapers of general circulation, minority media, and other suitable media outlets. Such notice must comply with HUD fair housing requirements. The PHA should specify who may apply, and where and when applications will be received.

PHA Policy

The PHA will announce the reopening of the waiting list at least 10 business days prior to the date applications will first be accepted. If the list is only being reopened for certain categories of families, this information will be contained in the notice. The notice will specify where, when, and how applications are to be received.

The PHA will give public notice by publishing the relevant information in suitable media outlets including, but not limited to the Home News-Tribune and Noticiero del Mundo.

4-II.D. FAMILY OUTREACH [24 CFR 903.2(d); 24 CFR 903.7(a) and (b)]

The PHA should conduct outreach as necessary to ensure that the PHA has a sufficient number of applicants on the waiting list to fill anticipated vacancies and to assure that the PHA is affirmatively furthering fair housing and complying with the Fair Housing Act.

Because HUD requires the PHA to admit a specified percentage of extremely low income families, the PHA may need to conduct special outreach to ensure that an adequate number of such families apply for public housing.

PHA outreach efforts must comply with fair housing requirements. This includes:

- Analyzing the housing market area and the populations currently being served to identify underserved populations
- Ensuring that outreach efforts are targeted to media outlets that reach eligible populations that are underrepresented in the program
- Avoiding outreach efforts that prefer or exclude people who are members of a protected class

PHA outreach efforts must be designed to inform qualified families about the availability of units under the program. These efforts may include, as needed, any of the following activities:

- Submitting press releases to local newspapers, including minority newspapers
- Developing informational materials and flyers to distribute to other agencies
- Providing application forms to other public and private agencies that serve the low income population
- Developing partnerships with other organizations that serve similar populations, including agencies that provide services for persons with disabilities

PHA Policy

The PHA will monitor the characteristics of the population being served and the characteristics of the population as a whole in the PHA's jurisdiction. Targeted outreach efforts will be undertaken if a comparison suggests that certain populations are being underserved.

4-II.E. REPORTING CHANGES IN FAMILY CIRCUMSTANCES

PHA Policy

While the family is on the waiting list, the family must inform the PHA, within 10 business days, of changes in family size or composition, preference status, or contact information, including current residence, mailing address, and phone number. The changes must be submitted in writing.

Changes in an applicant's circumstances while on the waiting list may affect the family's qualification for a particular bedroom size or entitlement to a preference. When an applicant reports a change that affects their placement on the waiting list, the waiting list will be updated accordingly.

4-II.F. UPDATING THE WAITING LIST

HUD requires the PHA to establish policies that describe the circumstances under which applicants will be removed from the waiting list [24 CFR 960.202(a)(2)(iv)].

Purging the Waiting List

The decision to remove an applicant family that includes a person with disabilities from the waiting list is subject to reasonable accommodation. If the applicant did not respond to the PHA's request for information or updates because of the family member's disability, the PHA must, upon the family's request, reinstate the applicant family to their former position on the waiting list as a reasonable accommodation [24 CFR 8.4(a), 24 CFR 100.204(a), and PH Occ GB, p. 39 and 40]. See Chapter 2 for further information regarding reasonable accommodations.

PHA Policy

The waiting list will be updated as needed to ensure that all applicant information is current and timely.

To update the waiting list, the PHA will send an update request via first class mail to each family on the waiting list to determine whether the family continues to be interested in, and to qualify for, the program. This update request will be sent to the last address that the PHA has on record for the family. The update request will provide a deadline by which the family must respond and will state that failure to respond will result in the applicant's name being removed from the waiting list.

The family's response must be in writing and may be delivered in person, by mail, or by fax. Responses should be postmarked or received by the PHA not later than 10 business days from the date of the PHA letter.

If the family fails to respond within 10 business days, the family will be removed from the waiting list without further notice.

If the notice is returned by the post office with no forwarding address, the applicant will be removed from the waiting list without further notice.

When a family is removed from the waiting list during the update process for failure to respond, no informal hearing will be offered. Such failures to act on the part of the applicant prevent the PHA from making an eligibility determination; therefore, no informal hearing is required.

If a family is removed from the waiting list for failure to respond, the PHA may reinstate the family if the lack of response was due to PHA error, or to circumstances beyond the family's control.

Removal from the Waiting List

PHA Policy

The PHA will remove an applicant from the waiting list upon request by the applicant family. In such cases, no informal hearing is required.

If the PHA determines that the family is not eligible for admission (see Chapter 3) at any time while the family is on the waiting list, the family will be removed from the waiting list.

If a family is removed from the waiting list because the PHA has determined the family is not eligible for admission, a notice will be sent to the family's address of record as well as to any alternate address provided on the initial application. The notice will state the reasons the family was removed from the waiting list and will inform the family how to request an informal hearing regarding the PHA's decision (see Chapter 14) [24 CFR 960.208(a)].

PART III: TENANT SELECTION

4-III.A. OVERVIEW

The PHA must establish tenant selection policies for families being admitted to public housing [24 CFR 960.201(a)]. The PHA must not require any specific income or racial quotas for any developments [24 CFR 903.2(d)]. The PHA must not assign persons to a particular section of a community or to a development or building based on race, color, religion, sex, disability, familial status or national origin for purposes of segregating populations [24 CFR 1.4(b)(1)(iii) and 24 CFR 903.2(d)(1)].

The order in which families will be selected from the waiting list depends on the selection method chosen by the PHA and is impacted in part by any selection preferences that the family qualifies for. The availability of units also may affect the order in which families are selected from the waiting list.

The PHA must maintain a clear record of all information required to verify that the family is selected from the waiting list according to the PHA's selection policies [24 CFR 960.206(e)(2)]. The PHA's policies must be posted any place where the PHA receives applications. The PHA must provide a copy of its tenant selection policies upon request to any applicant or tenant. The PHA may charge the family for providing a copy of its tenant selection policies [24 CFR 960.202(c)(2)].

PHA Policy

When an applicant or resident family requests a copy of the PHA's tenant selection policies, the PHA will provide copies to them free of charge.

4-III.B. SELECTION METHOD

PHAs must describe the method for selecting applicant families from the waiting list, including the system of admission preferences that the PHA will use.

Local Preferences [24 CFR 960.206]

PHAs are permitted to establish local preferences and to give priority to serving families that meet those criteria. HUD specifically authorizes and places restrictions on certain types of local preferences. HUD also permits the PHA to establish other local preferences, at its discretion. Any local preferences established must be consistent with the PHA plan and the consolidated plan, and must be based on local housing needs and priorities that can be documented by generally accepted data sources [24 CFR 960.206(a)].

PHA Policy

The PHA will not use local preferences.

Income Targeting Requirement [24 CFR 960.202(b)]

HUD requires that extremely low-income (ELI) families make up at least 40 percent of the families admitted to public housing during the PHA's fiscal year. ELI families are those with annual incomes at or below the federal poverty level or 30 percent of the area median income, whichever number is higher [*Federal Register* notice 6/25/14]. To ensure this requirement is met, the PHA may skip non-ELI families on the waiting list in order to select an ELI family.

If a PHA also operates a housing choice voucher (HCV) program, admissions of extremely low-income families to the PHA's HCV program during a PHA fiscal year that exceed the 75 percent minimum target requirement for the voucher program, shall be credited against the PHA's basic targeting requirement in the public housing program for the same fiscal year. However, under these circumstances the fiscal year credit to the public housing program must not exceed the lower of: (1) ten percent of public housing waiting list admissions during the PHA fiscal year; (2) ten percent of waiting list admissions to the PHA's housing choice voucher program during the PHA fiscal year; or (3) the number of qualifying low-income families who commence occupancy during the fiscal year of PHA public housing units located in census tracts with a poverty rate of 30 percent or more. For this purpose, qualifying low-income family means a low-income family other than an extremely low-income family.

PHA Policy

The PHA will monitor progress in meeting the ELI requirement throughout the fiscal year. ELI families will be selected ahead of other eligible families on an as-needed basis to ensure that the income targeting requirement is met.

Mixed Population Developments [24 CFR 960.407]

A mixed population development is a public housing development or portion of a development that was reserved for elderly families and disabled families at its inception (and has retained that character) or the PHA at some point after its inception obtained HUD approval to give preference in tenant selection for all units in the development (or portion of a development) to elderly and disabled families [24 CFR 960.102]. Elderly family means a family whose head, spouse, cohead, or sole member is a person who is at least 62 years of age. Disabled family means a family whose head, spouse, cohead, or sole member is a person with disabilities [24 CFR 5.403]. The PHA must give elderly and disabled families equal preference in selecting these families for admission to mixed population developments. The PHA may not establish a limit on the number of elderly or disabled families that may occupy a mixed population development. In selecting elderly and disabled families to fill these units, the PHA must first offer the units that have accessibility features for families that include a person with a disability and require the accessibility features of such units. The PHA may not discriminate against elderly or disabled families that include children (Fair Housing Amendments Act of 1988).

Units Designated for Elderly or Disabled Families [24 CFR 945]

The PHA may designate projects or portions of a public housing project specifically for elderly or disabled families. The PHA must have a HUD-approved allocation plan before the designation may take place.

Among the designated developments, the PHA must also apply any preferences that it has established. If there are not enough elderly families to occupy the units in a designated elderly development, the PHA may allow near-elderly families to occupy the units [24 CFR 945.303(c)(1)]. Near-elderly family means a family whose head, spouse, or cohead is at least 50 years old, but is less than 62 [24 CFR 5.403].

If there are an insufficient number of elderly families and near-elderly families for the units in a development designated for elderly families, the PHA must make available to all other families any unit that is ready for re-rental and has been vacant for more than 60 consecutive days [24 CFR 945.303(c)(2)].

The decision of any disabled family or elderly family not to occupy or accept occupancy in designated housing shall not have an adverse affect on their admission or continued occupancy in public housing or their position on or placement on the waiting list. However, this protection does not apply to any family who refuses to occupy or accept occupancy in designated housing because of the race, color, religion, sex, disability, familial status, or national origin of the occupants of the designated housing or the surrounding area [24 CFR 945.303(d)(1) and (2)].

This protection does apply to an elderly family or disabled family that declines to accept occupancy, respectively, in a designated project for elderly families or for disabled families, and requests occupancy in a general occupancy project or in a mixed population project [24 CFR 945.303(d)(3)].

PHA Policy

The PHA does not have designated elderly or designated disabled housing at this time.

Deconcentration of Poverty and Income-Mixing [24 CFR 903.1 and 903.2]

PHA Policy

Deconcentration does not apply since the PHA has only one general occupancy project.

4-III.C. NOTIFICATION OF SELECTION

When the family has been selected from the waiting list, the PHA must notify the family [24 CFR 960.208].

PHA Policy

The PHA will notify the family by first class mail when it is selected from the waiting list.

The notice will inform the family of the following:

Date, time, and location of the scheduled application interview, including any procedures for rescheduling the interview

Who is required to attend the interview

Documents that must be provided at the interview to document the legal identity of household members, including information about what constitutes acceptable documentation

Documents that must be provided at the interview to document eligibility for a preference, if applicable

Other documents and information that should be brought to the interview

If a notification letter is returned to the PHA with no forwarding address, the family will be removed from the waiting list without further notice. Such failure to act on the part of the applicant prevents the PHA from making an eligibility determination; therefore, no informal hearing will be offered.

4-III.D. THE APPLICATION INTERVIEW

HUD recommends that the PHA obtain the information and documentation needed to make an eligibility determination through a private interview. Being invited to attend an interview does not constitute admission to the program.

Assistance cannot be provided to the family until all SSN documentation requirements are met. However, if the PHA determines That an applicant family is otherwise eligible to participate in the program, the family may retain its place on the waiting list for a period of time determined by the PHA. [Notice PIH 2018-24]

Reasonable accommodation must be made for persons with disabilities who are unable to attend an interview due to their disability [24 CFR 8.4(a) and 24 CFR 100.204(a)].

PHA Policy

Families selected from the waiting list are required to participate in an eligibility interview.

The head of household and the spouse must attend the interview together. Verification of information pertaining to adult members of the household not present at the interview will not begin until signed release forms are returned to the PHA.

The interview will be conducted only if the head of household or spouse/cohead provides appropriate documentation of legal identity (Chapter 7 provides a discussion of proper documentation of legal identity). If the family representative does not provide the required documentation, the appointment may be rescheduled when the proper documents have been obtained.

The family must provide the information necessary to establish the family's eligibility, including suitability, and to determine the appropriate amount of rent the family will pay. The family must also complete required forms, provide required signatures, and submit required documentation. If any materials are missing, the PHA will provide the family with a written list of items that must be submitted.

Any required documents or information that the family is unable to provide at the interview must be provided within 10 business days of the interview (Chapter 7 provides details about longer submission deadlines for particular items, including documentation of Social Security numbers and eligible noncitizen status). If the family is unable to obtain the information or materials within the required time frame, the family may request an extension. If the required documents and information are not provided within the required time frame (plus any extensions), the family will be sent a notice of denial (see Chapter 3).

An advocate, interpreter, or other assistant may assist the family with the application and the interview process.

Interviews will be conducted in English. For limited English proficient (LEP) applicants, the PHA will provide translation services in accordance with the PHA's LEP plan.

If the family is unable to attend a scheduled interview, the family should contact the PHA in advance of the interview to schedule a new appointment. Applicants who fail to attend two scheduled interviews without PHA approval will have their applications made inactive based on the family's failure to supply information needed to determine eligibility. Such failure to act on the part of the applicant prevents the PHA from making an eligibility determination, therefore the PHA will not offer an informal hearing.

4-III.E. FINAL ELIGIBILITY DETERMINATION [24 CFR 960.208]

The PHA must verify all information provided by the family (see Chapter 7). Based on verified information related to the eligibility requirements, including PHA suitability standards, the PHA must make a final determination of eligibility (see Chapter 3).

When a determination is made that a family is eligible and satisfies all requirements for admission, including tenant selection criteria, the applicant must be notified of the approximate date of occupancy insofar as that date can be reasonably determined [24 CFR 960.208(b)].

PHA Policy

The PHA will notify a family in writing of their eligibility within 10 business days of the determination.

The PHA must promptly notify any family determined to be ineligible for admission of the basis for such determination, and must provide the applicant upon request, within a reasonable time after the determination is made, with an opportunity for an informal hearing on such determination [24 CFR 960.208(a)].

PHA Policy

If the PHA determines that the family is ineligible, the PHA will send written notification of the ineligibility determination within 10 business days of the determination. The notice will specify the reasons for ineligibility, and will inform the family of its right to request an informal hearing (see Chapter 14).

If the PHA uses a criminal record or sex offender registration information obtained under 24 CFR 5, Subpart J, as the basis of a denial, a copy of the record must precede the notice to deny, with an opportunity for the applicant to dispute the accuracy and relevance of the information before the PHA can move to deny the application. See Section 3-III.G for the PHA's policy regarding such circumstances.

Upon making an eligibility determination, the PHA must provide the family a notice of VAWA rights as well as the HUD VAWA self-certification form (form HUD-50066) in accordance with the Violence against Women Act of 2013, and as outlined in 16-VII.C. The notice and self-certification form must accompany the written notification of eligibility determination. This notice must be provided in both of the following instances: (1) when a family is notified of its eligibility; or (2) when a family is notified of its ineligibility.

Chapter 5

OCCUPANCY STANDARDS AND UNIT OFFERS

INTRODUCTION

The PHA must establish policies governing occupancy of dwelling units and offering dwelling units to qualified families.

This chapter contains policies for assigning unit size and making unit offers. The PHA's waiting list and selection policies are contained in Chapter 4. Together, Chapters 4 and 5 of the ACOP comprise the PHA's Tenant Selection and Assignment Plan (TSAP).

Policies in this chapter are organized in two parts.

Part I: Occupancy Standards. This part contains the PHA's standards for determining the appropriate unit size for families of different sizes, compositions, and types.

Part II: Unit Offers. This part contains the PHA's policies for making unit offers, and describes actions to be taken when unit offers are refused.

PART I: OCCUPANCY STANDARDS

5-I.A. OVERVIEW

Occupancy standards are established by the PHA to ensure that units are occupied by families of the appropriate size. This policy maintains the maximum usefulness of the units, while preserving them from underutilization or from excessive wear and tear due to overcrowding. Part I of this chapter explains the occupancy standards. These standards describe the methodology and factors the PHA will use to determine the size unit for which a family qualifies, and includes the identification of the minimum and maximum number of household members for each unit size. This part also identifies circumstances under which an exception to the occupancy standards may be approved.

5-I.B. DETERMINING UNIT SIZE

In selecting a family to occupy a particular unit, the PHA may match characteristics of the family with the type of unit available, for example, number of bedrooms [24 CFR 960.206(c)].

HUD does not specify the number of persons who may live in public housing units of various sizes. PHAs are permitted to develop appropriate occupancy standards as long as the standards do not have the effect of discriminating against families with children [PH Occ GB, p. 62].

Although the PHA does determine the size of unit the family qualifies for under the occupancy standards, the PHA does not determine who shares a bedroom/sleeping room.

The PHA's occupancy standards for determining unit size must be applied in a manner consistent with fair housing requirements.

PHA Policy

The PHA will use the same occupancy standards for each of its developments.

The PHA's occupancy standards are as follows:

The PHA will assign one bedroom for each two persons within the household, except in the following circumstances:

Persons of the opposite sex (other than spouses, and children under age 5) will not be required to share a bedroom.

Persons of different generations will not be required to share a bedroom.

Live-in aides will be allocated a separate bedroom. No additional bedrooms will be provided for the live-in aide's family.

Single person families will be allocated a zero or one bedroom.

Foster children will be included in determining unit size.

The PHA will reference the following standards in determining the appropriate unit bedroom size for a family:

BEDROOM SIZE	MINIMUM NUMBER OF PERSONS	MAXIMUM NUMBER OF PERSONS
0	1	1
1	1	2
2	2	4
3	3	6
4	4	8

5-I.C. EXCEPTIONS TO OCCUPANCY STANDARDS

Types of Exceptions

PHA Policy

The PHA will consider granting exceptions to the occupancy standards at the family's request if the PHA determines the exception is justified by the relationship, age, sex, health or disability of family members, or other personal circumstances.

For example, an exception may be granted if a larger bedroom size is needed for medical equipment due to its size and/or function, or as a reasonable accommodation for a person with disabilities.

When evaluating exception requests the PHA will consider the size and configuration of the unit. In no case will the PHA grant an exception that is in violation of local housing or occupancy codes, regulations or laws.

Requests from applicants to be placed on the waiting list for a unit size smaller than designated by the occupancy standards will be approved as long as the unit is not overcrowded according to local code, and the family agrees not to request a transfer for a period of two years from the date of admission, unless they have a subsequent change in family size or composition.

To prevent vacancies, the PHA may provide an applicant family with a larger unit than the occupancy standards permit. However, in these cases the family must agree to move to a suitable, smaller unit when another family qualifies for the larger unit and there is an appropriate size unit available for the family to transfer to.

Processing of Exceptions

PHA Policy

All requests for exceptions to the occupancy standards must be submitted in writing.

In the case of a request for exception as a reasonable accommodation, the PHA will encourage the resident to make the request in writing using a reasonable accommodation request form. However, the PHA will consider the exception request any time the resident indicates that an accommodation is needed whether or not a formal written request is submitted.

Requests for a larger size unit must explain the need or justification for the larger size unit, and must include appropriate documentation. Requests based on health-related reasons must be verified by a knowledgeable professional source, unless the disability and the disability-related request for accommodation is readily apparent or otherwise known.

The PHA will notify the family of its decision within 10 business days of receiving the family's request.

PART II: UNIT OFFERS

24 CFR 1.4(b)(2)(ii); 24 CFR 960.208

5-II.A. OVERVIEW

The PHA must assign eligible applicants to dwelling units in accordance with a plan that is consistent with civil rights and nondiscrimination laws.

In filling an actual or expected vacancy, the PHA must offer the dwelling unit to an applicant in the appropriate offer sequence. The PHA will offer the unit until it is accepted. This section describes the PHA's policies with regard to the number of unit offers that will be made to applicants selected from the waiting list. This section also describes the PHA's policies for offering units with accessibility features.

PHA Policy

The PHA will maintain a record of units offered, including location, date and circumstances of each offer, each acceptance or rejection, including the reason for the rejection.

5-II.B. NUMBER OF OFFERS

PHA Policy

The PHA has adopted a one-offer plan" for offering units to applicants. Under this plan, the PHA will determine a location within its jurisdiction that has an available unit of suitable size and type in the appropriate type of project.

5-II.C. TIME LIMIT FOR UNIT OFFER ACCEPTANCE OR REFUSAL

PHA Policy

Applicants must accept or refuse a unit offer within 3 business days of the date of the unit offer.

Offers made by telephone will be confirmed by letter.

5-II.D. REFUSALS OF UNIT OFFERS

Good Cause for Unit Refusal

PHA Policy

Applicants may refuse to accept a unit offer for "good cause." *Good cause* includes situations in which an applicant is willing to move but is unable to do so at the time of the unit offer, or the applicant demonstrates that acceptance of the offer would cause undue hardship not related to considerations of the applicant's race, color, national origin, etc. [PH Occ GB, p. 104]. Examples of good cause for refusal of a unit offer include, but are not limited to, the following:

The family demonstrates to the PHA's satisfaction that accepting the offer will place a family member's life, health, or safety in jeopardy. The family should offer specific and compelling documentation such as restraining orders; other

court orders; risk assessments related to witness protection from a law enforcement agency; or documentation of domestic violence, dating violence, sexual assault, or stalking in accordance with section 16-VII.D of this ACOP. Reasons offered must be specific to the family. Refusals due to location alone do not qualify for this good cause exemption.

In the case of a unit refusal for good cause the applicant will not be removed from the waiting list as described later in this section. The applicant will remain at the top of the waiting list until the family receives an offer for which they do not have good cause to refuse.

The PHA will require documentation of good cause for unit refusals.

Unit Refusal without Good Cause

PHA Policy

When an applicant rejects the final unit offer without good cause, the PHA will remove the applicant's name from the waiting list and send notice to the family of such removal. The notice will inform the family of their right to request an informal hearing and the process for doing so (see Chapter 14).

The applicant may reapply for assistance if the waiting list is open. If the waiting list is not open, the applicant must wait to reapply until the PHA opens the waiting list.

5-II.E. ACCESSIBLE UNITS [24 CFR 8.27]

PHAs must adopt suitable means to assure that information regarding the availability of accessible units reaches eligible individuals with disabilities, and take reasonable nondiscriminatory steps to maximize the utilization of such units by eligible individuals whose disability requires the accessibility features of a particular unit.

When an accessible unit becomes vacant, before offering such units to a non-disabled applicant the PHA must offer such units:

- First, to a current resident of another unit of the same development, or other public housing development under the PHA's control, who has a disability that requires the special features of the vacant unit and is occupying a unit not having such features, or if no such occupant exists, then
- Second, to an eligible qualified applicant on the waiting list having a disability that requires the special features of the vacant unit.

When offering an accessible unit to an applicant not having a disability requiring the accessibility features of the unit, the PHA may require the applicant to agree (and may incorporate this agreement in the lease) to move to a non-accessible unit when available.

PHA Policy

Families requiring an accessible unit may be over-housed in such a unit if there are no resident or applicant families of the appropriate size who also require the accessible features of the unit.

When there are no resident or applicant families requiring the accessible features of the unit, including families who would be over-housed, the PHA will offer the unit to a non-disabled applicant.

When offering an accessible unit to a non-disabled applicant, the PHA will require the applicant to agree to move to an available non-accessible unit within 30 days when either a current resident or an applicant needs the features of the unit and there is another unit available for the non-disabled family. This requirement will be a provision of the lease agreement.

5-II.F. DESIGNATED HOUSING

The PHA does not have designated units.

Chapter 6

INCOME AND RENT DETERMINATIONS

[24 CFR Part 5, Subparts E and F; 24 CFR 960, Subpart C]

INTRODUCTION

A family's annual income is used to determine their income eligibility for the public housing program and is also used to calculate the amount of the family's rent payment. The PHA will use the policies and methods described in this chapter to ensure that only income-eligible families receive assistance and that no family pays more or less rent than is required under the regulations. This chapter describes HUD regulations and PHA policies related to these topics in three parts as follows:

Part I: Annual Income. HUD regulations specify the sources of income to include and exclude to arrive at a family's annual income. These requirements and PHA policies for calculating annual income are found in Part I.

Part II: Adjusted Income. Once annual income has been established HUD regulations require the PHA to subtract from annual income any of five mandatory deductions for which a family qualifies. These requirements and PHA policies for calculating adjusted income are found in Part II.

Part III: Calculating Rent. This part describes the statutory formula for calculating total tenant payment (TTP), the use of utility allowances, and the methodology for determining family rent payment. Also included here are flat rents and the family's choice in rents.

PART I: ANNUAL INCOME

6-I.A. OVERVIEW

The general regulatory definition of *annual income* shown below is from 24 CFR 5.609.

5.609 Annual income.

- (a) Annual income means all amounts, monetary or not, which:
- (1) Go to, or on behalf of, the family head or spouse (even if temporarily absent) or to any other family member; or
 - (2) Are anticipated to be received from a source outside the family during the 12-month period following admission or annual reexamination effective date; and
 - (3) Which are not specifically excluded in paragraph [5.609(c)].
- (4) Annual income also means amounts derived (during the 12-month period) from assets to which any member of the family has access.

In addition to this general definition, HUD regulations establish policies for treating specific types of income and assets. The full texts of those portions of the regulations are provided in exhibits at the end of this chapter as follows:

- Annual Income Inclusions (Exhibit 6-1)
- Annual Income Exclusions (Exhibit 6-2)
- Treatment of Family Assets (Exhibit 6-3)
- Earned Income Disallowance (Exhibit 6-4)
- The Effect of Welfare Benefit Reduction (Exhibit 6-5)

Sections 6-I.B and 6-I.C discuss general requirements and methods for calculating annual income. The rest of this section describes how each source of income is treated for the purposes of determining annual income. HUD regulations present income inclusions and exclusions separately [24 CFR 5.609(b) and 24 CFR 5.609(c)]. In this ACOP, however, the discussions of income inclusions and exclusions are integrated by topic (e.g., all policies affecting earned income are discussed together in section 6-I.D). Verification requirements for annual income are discussed in Chapter 7.

6-I.B. HOUSEHOLD COMPOSITION AND INCOME

Income received by all family members must be counted unless specifically excluded by the regulations. It is the responsibility of the head of household to report changes in family composition. The rules on which sources of income are counted vary somewhat by family member. The chart below summarizes how family composition affects income determinations.

Summary of Income Included and Excluded by Person	
Live-in aides	Income from all sources is excluded [24 CFR 5.609(c)(5)].
Foster child or foster adult	Income from all sources is excluded [24 CFR 5.609(a)(1)].
Head, spouse, or cohead Other adult family members	All sources of income not specifically excluded by the regulations are included.
Children under 18 years of age	Employment income is excluded [24 CFR 5.609(c)(1)]. All other sources of income, except those specifically excluded by the regulations, are included.
Full-time students 18 years of age or older (not head, spouse, or cohead)	Employment income above \$480/year is excluded [24 CFR 5.609(c)(11)]. All other sources of income, except those specifically excluded by the regulations, are included.

Temporarily Absent Family Members

The income of family members approved to live in the unit will be counted, even if the family member is temporarily absent from the unit [HCV GB, p. 5-18].

PHA Policy

Generally, an individual who is or is expected to be absent from the assisted unit for 180 consecutive days or less is considered temporarily absent and continues to be considered a family member. Generally, an individual who is or is expected to be absent from the assisted unit for more than 180 consecutive days is considered permanently absent and no longer a family member. Exceptions to this general policy are discussed below.

Absent Students

PHA Policy

When someone who has been considered a family member attends school away from home, the person will continue to be considered a family member unless information becomes available to the PHA indicating that the student has established a separate household or the family declares that the student has established a separate household.

Absences Due to Placement in Foster Care

Children temporarily absent from the home as a result of placement in foster care are considered members of the family [24 CFR 5.403].

PHA Policy

If a child has been placed in foster care, the PHA will verify with the appropriate agency whether and when the child is expected to be returned to the home. Unless the agency confirms that the child has been permanently removed from the home, the child will be counted as a family member.

Absent Head, Spouse, or Cohead

PHA Policy

An employed head, spouse, or cohead absent from the unit more than 180 consecutive days due to employment will continue to be considered a family member.

Individuals Confined for Medical Reasons

PHA Policy

An individual confined to a nursing home or hospital on a permanent basis is not considered a family member.

If there is a question about the status of a family member, the PHA will request verification from a medical doctor and will use this determination. If the doctor cannot provide a determination, the person generally will be considered temporarily absent. The family may present evidence that the family member is confined on a permanent basis and request that the person not be considered a family member.

Joint Custody of Children

PHA Policy

Dependents that are subject to a joint custody arrangement will be considered a member of the family, if they live with the applicant or resident family 50 percent or more of the time.

When more than one applicant or assisted family (regardless of program) are claiming the same dependents as family members, the family with primary custody at the time of the initial examination or reexamination will be able to claim the dependents. If there is a dispute about which family should claim them, the PHA will make the determination based on available documents such as court orders, an IRS income tax return showing which family has claimed the child for income tax purposes, school records, or other credible documentation.

Caretakers for a Child

PHA Policy

The approval of a caretaker is at the PHA's discretion and subject to the PHA's screening criteria. If neither a parent nor a designated guardian remains in a household, the PHA will take the following actions.

If a responsible agency has determined that another adult is to be brought into the unit to care for a child for an indefinite period, the designated caretaker will not be considered a family member until a determination of custody or legal guardianship is made.

If a caretaker has assumed responsibility for a child without the involvement of a responsible agency or formal assignment of custody or legal guardianship, the caretaker will be treated as a visitor for 90 days. After the 90 days has elapsed, the caretaker will be considered a family member unless information is provided that would confirm that the caretaker's role is temporary. In such cases the PHA will extend the caretaker's status as an eligible visitor.

At any time that custody or guardianship legally has been awarded to a caretaker, the lease will be transferred to the caretaker, as head of household.

During any period that a caretaker is considered a visitor, the income of the caretaker is not counted in annual income and the caretaker does not qualify the family for any deductions from income.

6-I.C. ANTICIPATING ANNUAL INCOME

The PHA is required to count all income “anticipated to be received from a source outside the family during the 12-month period following admission or annual reexamination effective date” [24 CFR 5.609(a)(2)]. Policies related to anticipating annual income are provided below.

Basis of Annual Income Projection

The PHA generally will use current circumstances to determine anticipated income for the coming 12-month period. HUD authorizes the PHA to use other than current circumstances to anticipate income when:

- An imminent change in circumstances is expected [HCV GB, p. 5-17]
- It is not feasible to anticipate a level of income over a 12-month period (e.g., seasonal or cyclic income) [24 CFR 5.609(d)]
- The PHA believes that past income is the best available indicator of expected future income [24 CFR 5.609(d)]

PHAs are required to use HUD’s Enterprise Income Verification (EIV) system in its entirety as a third-party source to verify employment and income information, and to reduce administrative subsidy payment errors in accordance with HUD administrative guidance [24 CFR 5.233(a)(2)].

HUD allows PHAs to use tenant-provided documents to project income once EIV data has been received in such cases where the family does not dispute the EIV employer data and where the PHA does not determine it is necessary to obtain additional third-party data.

PHA Policy

When EIV is obtained and the family does not dispute the EIV employer data, the PHA will use current tenant-provided documents to project annual income. When the tenant-provided documents are pay stubs, the PHA will make every effort to obtain current and consecutive pay stubs dated within the last 60 days.

The PHA will obtain written and/or oral third-party verification in accordance with the verification requirements and policy in Chapter 7 in the following cases:

If EIV or other UIV data is not available,

If the family disputes the accuracy of the EIV employer data, and/or

If the PHA determines additional information is needed.

In such cases, the PHA will review and analyze current data to anticipate annual income. In all cases, the family file will be documented with a clear record of the reason for the decision, and a clear audit trail will be left as to how the PHA annualized projected income.

When the PHA cannot readily anticipate income based upon current circumstances (e.g., in the case of seasonal employment, unstable working hours, or suspected fraud), the PHA will review and analyze historical data for patterns of employment, paid benefits, and receipt of other income and use the results of this analysis to establish annual income.

Any time current circumstances are not used to project annual income, a clear rationale for the decision will be documented in the file. In all such cases the family may present information and documentation to the PHA to show why the historic pattern does not represent the family's anticipated income.

Known Changes in Income

If the PHA verifies an upcoming increase or decrease in income, annual income will be calculated by applying each income amount to the appropriate part of the 12-month period.

Example: An employer reports that a full-time employee who has been receiving \$8/hour will begin to receive \$8.25/hour in the eighth week after the effective date of the reexamination. In such a case the PHA would calculate annual income as follows: $(\$8/\text{hour} \times 40 \text{ hours} \times 7 \text{ weeks}) + (\$8.25 \times 40 \text{ hours} \times 45 \text{ weeks})$.

The family may present information that demonstrates that implementing a change before its effective date would create a hardship for the family. In such cases the PHA will calculate annual income using current circumstances and then require an interim reexamination when the change actually occurs. This requirement will be imposed even if the PHA's policy on reexaminations does not require interim reexaminations for other types of changes.

When tenant-provided third-party documents are used to anticipate annual income, they will be dated within the last 60 days of the reexamination interview date.

Projecting Income

In HUD's EIV webcast of January 2008, HUD made clear that PHAs are not to use EIV quarterly wages to project annual income.

6-I.D. EARNED INCOME

Types of Earned Income Included in Annual Income

Wages and Related Compensation [24 CFR 5.609(b)(1)]

The full amount, before any payroll deductions, of wages and salaries, overtime pay, commissions, fees, tips and bonuses, and other compensation for personal services is included in annual income.

PHA Policy

For persons who regularly receive bonuses or commissions, the PHA will verify and then average amounts received for the two years preceding admission or reexamination. If only a one-year history is available, the PHA will use the prior year amounts. In either case the family may provide, and the PHA will consider, a credible justification for not using this history to anticipate future bonuses or commissions. If a new employee has not yet received any bonuses or commissions, the PHA will count only the amount estimated by the employer. The file will be documented appropriately.

Some Types of Military Pay

All regular pay, special pay and allowances of a member of the Armed Forces are counted [24 CFR 5.609(b)(8)] except for the special pay to a family member serving in the Armed Forces who is exposed to hostile fire [24 CFR 5.609(c)(7)].

Types of Earned Income Not Counted in Annual Income

Temporary, Nonrecurring, or Sporadic Income [24 CFR 5.609(c)(9)]

This type of income (including gifts) is not included in annual income.

PHA Policy

Sporadic income is income that is not received periodically and cannot be reliably predicted. For example, the income of an individual who works occasionally as a handyman would be considered sporadic if future work could not be anticipated and no historic, stable pattern of income existed.

Children's Earnings [24 CFR 5.609(c)(1)]

Employment income earned by children (including foster children) under the age of 18 years is not included in annual income. (See Eligibility chapter for a definition of *foster children*.)

Certain Earned Income of Full-Time Students

Earnings in excess of \$480 for each full-time student 18 years old or older (except for the head, spouse, or cohead) are not counted [24 CFR 5.609(c)(11)]. To be considered "full-time," a student must be considered "full-time" by an educational institution with a degree or certificate program [HCV GB, p. 5-29].

Income of a Live-in Aide

Income earned by a live-in aide, as defined in [24 CFR 5.403], is not included in annual income [24 CFR 5.609(c)(5)]. (See Eligibility chapter for a full discussion of live-in aides.)

Income Earned under Certain Federal Programs [24 CFR 5.609(c)(17)]

Income from some federal programs is specifically excluded from consideration as income, including:

- Payments to volunteers under the Domestic Volunteer Services Act of 1973 (42 U.S.C. 5044(g), 5058)
- Awards under the federal work-study program (20 U.S.C. 1087 uu)
- Payments received from programs funded under Title V of the Older Americans Act of 1985 (42 U.S.C. 3056(f))
- Allowances, earnings, and payments to AmeriCorps participants under the National and Community Service Act of 1990 (42 U.S.C. 12637(d))
- Allowances, earnings, and payments to participants in programs funded under the Workforce Investment Act of 1998 (29 U.S.C. 2931)

Resident Service Stipend [24 CFR 5.600(c)(8)(iv)]

Amounts received under a resident service stipend are not included in annual income. A resident service stipend is a modest amount (not to exceed \$200 per individual per month) received by a resident for performing a service for the PHA, on a part-time basis, that enhances the quality of life in the development. Such services may include, but are not limited to, fire patrol, hall monitoring, lawn maintenance, resident initiatives coordination, and serving as a member of the PHA's governing board. No resident may receive more than one such stipend during the same period of time.

State and Local Employment Training Programs

Incremental earnings and benefits to any family member resulting from participation in qualifying state or local employment training programs (including training programs not affiliated with a local government) and training of a family member as resident management staff are excluded from annual income. Amounts excluded by this provision must be received under employment training programs with clearly defined goals and objectives and are excluded only for the period during which the family member participates in the training program [24 CFR 5.609(c)(8)(v)].

PHA Policy

The PHA defines *training program* as “a learning process with goals and objectives, generally having a variety of components, and taking place in a series of sessions over a period of time. It is designed to lead to a higher level of proficiency, and it enhances the individual’s ability to obtain employment. It may have performance standards to measure proficiency. Training may include, but is not limited to: (1) classroom training in a specific occupational skill, (2) on-the-job training with wages subsidized by the program, or (3) basic education” [expired Notice PIH 98-2, p. 3].

The PHA defines *incremental earnings and benefits* as the difference between (1) the total amount of welfare assistance and earnings of a family member prior to enrollment in a training program and (2) the total amount of welfare assistance and earnings of the family member after enrollment in the program [expired Notice PIH 98-2, pp. 3–4].

In calculating the incremental difference, the PHA will use as the pre-enrollment income the total annualized amount of the family member’s welfare assistance and earnings reported on the family’s most recently completed HUD-50058.

End of participation in a training program must be reported in accordance with the PHA's interim reporting requirements (see chapter on reexaminations).

HUD-Funded Training Programs

Amounts received under training programs funded in whole or in part by HUD [24 CFR 5.609(c)(8)(i)] are excluded from annual income. Eligible sources of funding for the training include operating subsidy, Section 8 administrative fees, and modernization, Community Development Block Grant (CDBG), HOME program, and other grant funds received from HUD.

PHA Policy

To qualify as a training program, the program must meet the definition of *training program* provided above for state and local employment training programs.

Earned Income Tax Credit. Earned income tax credit (EITC) refund payments received on or after January 1, 1991 (26 U.S.C. 32(j)), are excluded from annual income [24 CFR 5.609(c)(17)]. Although many families receive the EITC annually when they file taxes, an EITC can also be received throughout the year. The prorated share of the annual EITC is included in the employee's payroll check.

Earned Income Disallowance. The earned income disallowance is discussed in section 6-I.E below.

6-I.E. EARNED INCOME DISALLOWANCE [24 CFR 960.255; Streamlining Final Rule (SFR) Federal Register 3/8/16]

The earned income disallowance (EID) encourages people to enter the work force by not including the full value of increases in earned income for a period of time. The full text of 24 CFR 960.255 is included as Exhibit 6-4 at the end of this chapter. Eligibility criteria and limitations on the disallowance are summarized below.

Eligibility

This disallowance applies only to individuals in families already participating in the public housing program (not at initial examination). To qualify, the family must experience an increase in annual income that is the result of one of the following events:

- Employment of a family member who was previously unemployed for one or more years prior to employment. *Previously unemployed* includes a person who annually has earned not more than the minimum wage applicable to the community multiplied by 500 hours. The applicable minimum wage is the federal minimum wage unless there is a higher state or local minimum wage.
- Increased earnings by a family member whose earnings increase during participation in an economic self-sufficiency or job-training program. A self-sufficiency program includes a program designed to encourage, assist, train, or facilitate the economic independence of HUD-assisted families or to provide work to such families [24 CFR 5.603(b)].
- New employment or increased earnings by a family member who has received benefits or services under Temporary Assistance for Needy Families (TANF) or any other state program funded under Part A of Title IV of the Social Security Act within the past six months. If the benefits are received in the form of monthly maintenance, there is no minimum amount. If the benefits or services are received in a form other than monthly maintenance, such as one-time payments, wage subsidies, or transportation assistance, the total amount received over the six-month period must be at least \$500.

Calculation of the Disallowance

Calculation of the earned income disallowance for an eligible member of a qualified family begins with a comparison of the member's current income with his or her "baseline income." The family member's baseline income is his or her income immediately prior to qualifying for the EID. The family member's baseline income remains constant throughout the period that he or she is participating in the EID.

While qualification for the disallowance is the same for all families, calculation of the disallowance will differ depending on when the family member qualified for the EID. Residents qualifying prior to May 9, 2016 will have the disallowance calculated under the "Original Calculation Method" described below, which requires a maximum lifetime disallowance period of up to 48 consecutive months. Residents qualifying on or after May 9, 2016 will be subject to the "Revised Calculation Method," which shortens the lifetime disallowance period to 24 consecutive months.

Under both the original and new methods, the EID eligibility criteria, the benefit amount, the single lifetime eligibility requirement and the ability of the applicable family member to stop and restart employment during the eligibility period are the same.

Original Calculation Method

Initial 12-Month Exclusion

During the initial 12-month exclusion period, the full amount (100 percent) of any increase in income attributable to new employment or increased earnings is excluded. The 12 months are cumulative and need not be consecutive.

PHA Policy

The initial EID exclusion period will begin on the first of the month following the date an eligible member of a qualified family is first employed or first experiences an increase in earnings.

Second 12-Month Exclusion and Phase-In

During the second 12-month exclusion period, the exclusion is reduced to half (50 percent) of any increase in income attributable to employment or increased earnings. The 12 months are cumulative and need not be consecutive.

Lifetime Limitation

The EID has a four-year (48-month) lifetime maximum. The four-year eligibility period begins at the same time that the initial exclusion period begins and ends 48 months later. The one-time eligibility for the EID applies even if the eligible individual begins to receive assistance from another housing agency, if the individual moves between public housing and Section 8 assistance, or if there are breaks in assistance.

PHA Policy

During the 48-month eligibility period, the PHA will conduct an interim reexamination each time there is a change in the family member's annual income that affects or is affected by the EID (e.g., when the family member's income falls to a level at or below his/her prequalifying income, when one of the exclusion periods ends, and at the end of the lifetime maximum eligibility period).

Revised Calculation Method

Initial 12-Month Exclusion

During the initial exclusion period of 12 consecutive months, the full amount (100 percent) of any increase in income attributable to new employment or increased earnings is excluded.

PHA Policy

The initial EID exclusion period will begin on the first of the month following the date an eligible member of a qualified family is first employed or first experiences an increase in earnings.

Second 12-Month Exclusion

During the second exclusion period of 12 consecutive months, the PHA must exclude at least 50 percent of any increase in income attributable to employment or increased earnings.

PHA Policy

During the second 12-month exclusion period, the PHA will exclude 100 percent of any increase in income attributable to new employment or increased earnings.

Lifetime Limitation

The EID has a two-year (24-month) lifetime maximum. The two-year eligibility period begins at the same time that the initial exclusion period begins and ends 24 months later. During the 24-month period, an individual remains eligible for EID even if they receive assistance from a different housing agency, move between public housing and Section 8 assistance, or have breaks in assistance.

Individual Savings Accounts [24 CFR 960.255(d)]

PHA Policy

The PHA chooses not to establish a system of individual savings accounts (ISAs) for families who qualify for the EID.

6-I.F. BUSINESS INCOME [24 CFR 5.609(b)(2)]

Annual income includes “the net income from the operation of a business or profession. Expenditures for business expansion or amortization of capital indebtedness shall not be used as deductions in determining net income. An allowance for depreciation of assets used in a business or profession may be deducted, based on straight line depreciation, as provided in Internal Revenue Service regulations. Any withdrawal of cash or assets from the operation of a business or profession will be included in income, except to the extent the withdrawal is reimbursement of cash or assets invested in the operation by the family” [24 CFR 5.609(b)(2)].

Business Expenses

Net income is “gross income less business expense” [HCV GB, p. 5-19].

PHA Policy

To determine business expenses that may be deducted from gross income, the PHA will use current applicable Internal Revenue Service (IRS) rules for determining allowable business expenses [see IRS Publication 535], unless a topic is addressed by HUD regulations or guidance as described below.

Business Expansion

HUD regulations do not permit the PHA to deduct from gross income expenses for business expansion.

PHA Policy

Business expansion is defined as any capital expenditures made to add new business activities, to expand current facilities, or to operate the business in additional locations. For example, purchase of a street sweeper by a construction business for the purpose of adding street cleaning to the services offered by the business would be considered a business expansion. Similarly, the purchase of a property by a hair care business to open at a second location would be considered a business expansion.

Capital Indebtedness

HUD regulations do not permit the PHA to deduct from gross income the amortization of capital indebtedness.

PHA Policy

Capital indebtedness is defined as the principal portion of the payment on a capital asset such as land, buildings, and machinery. This means the PHA will allow as a business expense interest, but not principal, paid on capital indebtedness.

Negative Business Income

If the net income from a business is negative, no business income will be included in annual income; a negative amount will not be used to offset other family income.

Withdrawal of Cash or Assets from a Business

HUD regulations require the PHA to include in annual income the withdrawal of cash or assets from the operation of a business or profession unless the withdrawal reimburses a family member for cash or assets invested in the business by the family.

PHA Policy

Acceptable investments in a business include cash loans and contributions of assets or equipment. For example, if a member of a tenant family provided an up-front loan of \$2,000 to help a business get started, the PHA will not count as income any withdrawals from the business up to the amount of this loan until the loan has been repaid. Investments do not include the value of labor contributed to the business without compensation.

Co-owned Businesses

PHA Policy

If a business is co-owned with someone outside the family, the family must document the share of the business it owns. If the family's share of the income is lower than its share of ownership, the family must document the reasons for the difference.

6-I.G. ASSETS [24 CFR 5.609(b)(3) and 24 CFR 5.603(b)]

Overview

There is no asset limitation for participation in the public housing program. However, HUD requires that the PHA include in annual income the anticipated “interest, dividends, and other net income of any kind from real or personal property” [24 CFR 5.609(b)(3)]. This section discusses how the income from various types of assets is determined. For most types of assets, the PHA must determine the value of the asset in order to compute income from the asset. Therefore, for each asset type, this section discusses:

- How the value of the asset will be determined
- How income from the asset will be calculated

Exhibit 6-1 provides the regulatory requirements for calculating income from assets [24 CFR 5.609(b)(3)], and Exhibit 6-3 provides the regulatory definition of *net family assets*. This section begins with a discussion of general policies related to assets and then provides HUD rules and PHA policies related to each type of asset.

Optional policies for family self-certification of assets are found in Chapter 7

General Policies

Income from Assets

The PHA generally will use current circumstances to determine both the value of an asset and the anticipated income from the asset. As is true for all sources of income, HUD authorizes the PHA to use other than current circumstances to anticipate income when (1) an imminent change in circumstances is expected (2) it is not feasible to anticipate a level of income over 12 months or (3) the PHA believes that past income is the best indicator of anticipated income. For example, if a family member owns real property that typically receives rental income but the property is currently vacant, the PHA can take into consideration past rental income along with the prospects of obtaining a new tenant.

PHA Policy

Any time current circumstances are not used to determine asset income, a clear rationale for the decision will be documented in the file. In such cases the family may present information and documentation to the PHA to show why the asset income determination does not represent the family’s anticipated asset income.

Valuing Assets

The calculation of asset income sometimes requires the PHA to make a distinction between an asset's market value and its cash value.

- The market value of an asset is its worth in the market (e.g., the amount a buyer would pay for real estate or the total value of an investment account).
- The cash value of an asset is its market value less all reasonable amounts that would be incurred when converting the asset to cash.

PHA Policy

Reasonable costs that would be incurred when disposing of an asset include, but are not limited to, penalties for premature withdrawal, broker and legal fees, and settlement costs incurred in real estate transactions [HCV GB, p. 5-28 and PH Occ GB, p. 121].

Lump-Sum Receipts

Payments that are received in a single lump sum, such as inheritances, capital gains, lottery winnings, insurance settlements, and proceeds from the sale of property, are generally considered assets, not income. However, such lump-sum receipts are counted as assets only if they are retained by a family in a form recognizable as an asset (e.g., deposited in a savings or checking account) [RHIIP FAQs]. (For a discussion of lump-sum payments that represent the delayed start of a periodic payment, most of which are counted as income, see sections 6-I.H and 6-I.I.)

Imputing Income from Assets [24 CFR 5.609(b)(3), Notice PIH 2012-29]

When net family assets are \$5,000 or less, the PHA will include in annual income the actual income anticipated to be derived from the assets. When the family has net family assets in excess of \$5,000, the PHA will include in annual income the greater of (1) the actual income derived from the assets or (2) the imputed income. Imputed income from assets is calculated by multiplying the total cash value of all family assets by an average passbook savings rate as determined by the PHA.

- Note: The HUD field office no longer provides an interest rate for imputed asset income. The "safe harbor" is now for the PHA to establish a passbook rate within 0.75 percent of a national average.
- The PHA must review its passbook rate annually to ensure that it remains within 0.75 percent of the national average.

PHA Policy

The PHA will initially set the imputed asset passbook rate at the national rate established by the Federal Deposit Insurance Corporation (FDIC).

The PHA will review the passbook rate annually, in December of each year. The rate will not be adjusted unless the current PHA rate is no longer within 0.75 percent of the national rate. If it is no longer within 0.75 percent of the national rate, the passbook rate will be set at the current national rate.

Changes to the passbook rate will take effect on February 1 following the December review.

Determining Actual Anticipated Income from Assets

It may or may not be necessary for the PHA to use the value of an asset to compute the actual anticipated income from the asset. When the value is required to compute the anticipated income from an asset, the market value of the asset is used. For example, if the asset is a property for which a family receives rental income, the anticipated income is determined by annualizing the actual monthly rental amount received for the property; it is not based on the property's market value. However, if the asset is a savings account, the anticipated income is determined by multiplying the market value of the account by the interest rate on the account.

Withdrawal of Cash or Liquidation of Investments

Any withdrawal of cash or assets from an investment will be included in income except to the extent that the withdrawal reimburses amounts invested by the family. For example, when a family member retires, the amount received by the family from a retirement investment plan is not counted as income until the family has received payments equal to the amount the family member deposited into the retirement investment plan.

Jointly Owned Assets

The regulation at 24 CFR 5.609(a)(4) specifies that annual income includes "amounts derived (during the 12-month period) from assets to which any member of the family has access."

PHA Policy

If an asset is owned by more than one person and any family member has unrestricted access to the asset, the PHA will count the full value of the asset. A family member has unrestricted access to an asset when he or she can legally dispose of the asset without the consent of any of the other owners.

If an asset is owned by more than one person, including a family member, but the family member does not have unrestricted access to the asset, the PHA will prorate the asset according to the percentage of ownership. If no percentage is specified or provided for by state or local law, the PHA will prorate the asset evenly among all owners.

Assets Disposed Of for Less than Fair Market Value [24 CFR 5.603(b)]

HUD regulations require the PHA to count as a current asset any business or family asset that was disposed of for less than fair market value during the two years prior to the effective date of the examination/reexamination, except as noted below.

Minimum Threshold

The PHA may set a threshold below which assets disposed of for less than fair market value will not be counted [HCV GB, p. 5-27].

PHA Policy

The PHA will not include the value of assets disposed of for less than fair market value unless the cumulative fair market value of all assets disposed of during the past two years exceeds the gross amount received for the assets by more than \$1,000.

When the two-year period expires, the income assigned to the disposed asset(s) also expires. If the two-year period ends between annual recertifications, the family may request an interim recertification to eliminate consideration of the asset(s).

Assets placed by the family in nonrevocable trusts are considered assets disposed of for less than fair market value except when the assets placed in trust were received through settlements or judgments.

Separation or Divorce

The regulation also specifies that assets are not considered disposed of for less than fair market value if they are disposed of as part of a separation or divorce settlement and the applicant or tenant receives important consideration not measurable in dollar terms.

PHA Policy

All assets disposed of as part of a separation or divorce settlement will be considered assets for which important consideration not measurable in monetary terms has been received. In order to qualify for this exemption, a family member must be subject to a formal separation or divorce settlement agreement established through arbitration, mediation, or court order.

Foreclosure or Bankruptcy

Assets are not considered disposed of for less than fair market value when the disposition is the result of a foreclosure or bankruptcy sale.

Family Declaration

PHA Policy

Families must sign a declaration form at initial certification and each annual recertification identifying all assets that have been disposed of for less than fair market value or declaring that no assets have been disposed of for less than fair market value. The PHA may verify the value of the assets disposed of if other information available to the PHA does not appear to agree with the information reported by the family.

Types of Assets

Checking and Savings Accounts

For regular checking accounts and savings accounts, *cash value* has the same meaning as *market value*. If a checking account does not bear interest, the anticipated income from the account is zero.

PHA Policy

In determining the value of a checking account, the PHA will use the average monthly balance for the last six months.

In determining the value of a savings account, the PHA will use the current balance.

In determining the anticipated income from an interest-bearing checking or savings account, the PHA will multiply the value of the account by the current rate of interest paid on the account.

Investment Accounts Such as Stocks, Bonds, Saving Certificates, and Money Market Funds

Interest or dividends earned by investment accounts are counted as actual income from assets even when the earnings are reinvested. The cash value of such an asset is determined by deducting from the market value any broker fees, penalties for early withdrawal, or other costs of converting the asset to cash.

PHA Policy

In determining the market value of an investment account, the PHA will use the value of the account on the most recent investment report.

How anticipated income from an investment account will be calculated depends on whether the rate of return is known. For assets that are held in an investment account with a known rate of return (e.g., savings certificates), asset income will be calculated based on that known rate (market value multiplied by rate of earnings). When the anticipated rate of return is not known (e.g., stocks), the PHA will calculate asset income based on the earnings for the most recent reporting period.

Equity in Real Property or Other Capital Investments

Equity (cash value) in a property or other capital asset is the estimated current market value of the asset less the unpaid balance on all loans secured by the asset and reasonable costs (such as broker fees) that would be incurred in selling the asset [HCV GB, p. 5-25 and PH, p. 121].

PHA Policy

In determining the equity, the PHA will determine market value by examining recent sales of at least three properties in the surrounding or similar neighborhood that possess comparable factors that affect market value.

The PHA will first use the payoff amount for the loan (mortgage) as the unpaid balance to calculate equity. If the payoff amount is not available, the PHA will use the basic loan balance information to deduct from the market value in the equity calculation.

Equity in real property and other capital investments is considered in the calculation of asset income **except** for the following types of assets:

- Equity accounts in HUD homeownership programs [24 CFR 5.603(b)]
- Equity in real property when a family member's main occupation is real estate [HCV GB, p. 5-25]. This real estate is considered a business asset, and income related to this asset will be calculated as described in section 6-I.F.
- Interests in Indian Trust lands [24 CFR 5.603(b)]
- Real property and capital assets that are part of an active business or farming operation [HCV GB, p. 5-25]

The PHA must also deduct from the equity the reasonable costs for converting the asset to cash. Using the formula for calculating equity specified above, the net cash value of real property is the market value of the loan (mortgage) minus the expenses to convert to cash [Notice PIH 2012-3].

PHA Policy

For the purposes of calculating expenses to convert to cash for real property, the PHA will use ten percent of the market value of the home.

A family may have real property as an asset in two ways: (1) owning the property itself and (2) holding a mortgage or deed of trust on the property. In the case of a property owned by a family member, the anticipated asset income generally will be in the form of rent or other payment for the use of the property. If the property generates no income, actual anticipated income from the asset will be zero.

In the case of a mortgage or deed of trust held by a family member, the outstanding balance (unpaid principal) is the cash value of the asset. The interest portion only of payments made to the family in accordance with the terms of the mortgage or deed of trust is counted as anticipated asset income.

PHA Policy

In the case of capital investments owned jointly with others not living in a family's unit, a prorated share of the property's cash value will be counted as an asset unless the PHA determines that the family receives no income from the property and is unable to sell or otherwise convert the asset to cash.

Trusts

A *trust* is a legal arrangement generally regulated by state law in which one party (the creator or grantor) transfers property to a second party (the trustee) who holds the property for the benefit of one or more third parties (the beneficiaries).

Revocable Trusts

If any member of a family has the right to withdraw the funds in a trust, the value of the trust is considered an asset [HCV GB, p. 5-25]. Any income earned as a result of investment of trust funds is counted as actual asset income, whether the income is paid to the family or deposited in the trust.

Nonrevocable Trusts

In cases where a trust is not revocable by, or under the control of, any member of a family, the value of the trust fund is not considered an asset. However, any income distributed to the family from such a trust is counted as a periodic payment or a lump-sum receipt, as appropriate [24 CFR 5.603(b)]. (Periodic payments are covered in section 6-I.H. Lump-sum receipts are discussed earlier in this section.)

Retirement Accounts

Company Retirement/Pension Accounts

In order to correctly include or exclude as an asset any amount held in a company retirement or pension account by an employed person, the PHA must know whether the money is accessible before retirement [HCV GB, p. 5-26].

While a family member is employed, only the amount the family member can withdraw without retiring or terminating employment is counted as an asset [HCV GB, p. 5-26].

After a family member retires or terminates employment, any amount distributed to the family member is counted as a periodic payment or a lump-sum receipt, as appropriate [HCV GB, p. 5-26], except to the extent that it represents funds invested in the account by the family member. (For more on periodic payments, see section 6-I.H.) The balance in the account is counted as an asset only if it remains accessible to the family member.

IRA, Keogh, and Similar Retirement Savings Accounts

IRA, Keogh, and similar retirement savings accounts are counted as assets even though early withdrawal would result in a penalty [HCV GB, p. 5-25].

Personal Property

Personal property held as an investment, such as gems, jewelry, coin collections, antique cars, etc., is considered an asset [HCV GB, p. 5-25].

PHA Policy

In determining the value of personal property held as an investment, the PHA will use the family's estimate of the value. The PHA may obtain an appraisal if there is reason to believe that the family's estimated value is off by \$50 or more. The family must cooperate with the appraiser but cannot be charged any costs related to the appraisal.

Generally, personal property held as an investment generates no income until it is disposed of. If regular income is generated (e.g., income from renting the personal property), the amount that is expected to be earned in the coming year is counted as actual income from the asset.

Necessary items of personal property are not considered assets [24 CFR 5.603(b)].

PHA Policy

Necessary personal property consists of only those items not held as an investment. It may include clothing, furniture, household furnishings, jewelry, and vehicles, including those specially equipped for persons with disabilities.

Life Insurance

The cash value of a life insurance policy available to a family member before death, such as a whole life or universal life policy, is included in the calculation of the value of the family's assets [HCV GB 5-25]. The cash value is the surrender value. If such a policy earns dividends or interest that the family could elect to receive, the anticipated amount of dividends or interest is counted as income from the asset whether or not the family actually receives it.

6-I.H. PERIODIC PAYMENTS

Periodic payments are forms of income received on a regular basis. HUD regulations specify periodic payments that are and are not included in annual income.

Periodic Payments Included in Annual Income

- Periodic payments from sources such as social security, unemployment and welfare assistance, annuities, insurance policies, retirement funds, and pensions. However, periodic payments from retirement accounts, annuities, and similar forms of investments are counted only after they exceed the amount contributed by the family [24 CFR 5.609(b)(4) and (b)(3)].
- Disability or death benefits and lottery receipts paid periodically, rather than in a single lump sum [24 CFR 5.609(b)(4) and HCV, p. 5-14]

Lump-Sum Payments for the Delayed Start of a Periodic Payment

Most lump sums received as a result of delays in processing periodic payments, such as unemployment or welfare assistance, are counted as income. However, lump-sum receipts for the delayed start of periodic social security or supplemental security income (SSI) payments are not counted as income. Additionally, any deferred disability benefits that are received in a lump sum or in prospective monthly amounts from the Department of Veterans Affairs are to be excluded from annual income [24 CFR 5.609(c)(14)].

PHA Policy

When a delayed-start payment is received and reported during the period in which the PHA is processing an annual reexamination, the PHA will adjust the tenant rent retroactively for the period the payment was intended to cover. The family may pay in full any amount due or request to enter into a repayment agreement with the PHA.

See the chapter on reexaminations for information about a family's obligation to report lump-sum receipts between annual reexaminations.

Treatment of Overpayment Deductions from Social Security Benefits

The PHA must make a special calculation of annual income when the Social Security Administration (SSA) overpays an individual, resulting in a withholding or deduction from his or her benefit amount until the overpayment is paid in full. The amount and duration of the withholding will vary depending on the amount of the overpayment and the percent of the benefit rate withheld. Regardless of the amount withheld or the length of the withholding period, the PHA must use the reduced benefit amount after deducting only the amount of the overpayment withholding from the gross benefit amount [Notice PIH 2018-24].

Periodic Payments Excluded from Annual Income

- Payments received for the care of foster children or foster adults (usually persons with disabilities, unrelated to the tenant family, who are unable to live alone) [24 CFR 5.609(c)(2)]. Kinship care payments are considered equivalent to foster care payments and are also excluded from annual income [Notice PIH 2012-1].

PHA Policy

The PHA will exclude payments for the care of foster children and foster adults only if the care is provided through an official arrangement with a local welfare agency [HCV GB, p. 5-18].

- Amounts paid by a state agency to a family with a member who has a developmental disability and is living at home to offset the cost of services and equipment needed to keep the developmentally disabled family member at home [24 CFR 5.609(c)(16)]
- Amounts received under the Low-Income Home Energy Assistance Program (42 U.S.C. 1626(c)) [24 CFR 5.609(c)(17)]
- Amounts received under the Child Care and Development Block Grant Act of 1990 (42 U.S.C. 9858q) [24 CFR 5.609(c)(17)]
- Earned Income Tax Credit (EITC) refund payments (26 U.S.C. 32(j)) [24 CFR 5.609(c)(17)].
Note: EITC may be paid periodically if the family elects to receive the amount due as part of payroll payments from an employer.
- Lump sums received as a result of delays in processing Social Security and SSI payments (see section 6-I.H.) [24 CFR 5.609(c)(14)].
- Lump-sums or prospective monthly amounts received as deferred disability benefits from the Department of Veterans Affairs (VA) [24 CFR 5.609(c)(14)].

6-I.I. PAYMENTS IN LIEU OF EARNINGS

Payments in lieu of earnings, such as unemployment and disability compensation, worker's compensation, and severance pay, are counted as income [24 CFR 5.609(b)(5)] if they are received either in the form of periodic payments or in the form of a lump-sum amount or prospective monthly amounts for the delayed start of a periodic payment. If they are received in a one-time lump sum (as a settlement, for instance), they are treated as lump-sum receipts [24 CFR 5.609(c)(3)]. (See also the discussion of periodic payments in section 6-I.H and the discussion of lump-sum receipts in section 6-I.G.)

6-I.J. WELFARE ASSISTANCE

Overview

Welfare assistance is counted in annual income. Welfare assistance includes Temporary Assistance for Needy Families (TANF) and any payments to individuals or families based on need that are made under programs funded separately or jointly by federal, state, or local governments [24 CFR 5.603(b)].

Sanctions Resulting in the Reduction of Welfare Benefits [24 CFR 5.615]

The PHA must make a special calculation of annual income when the welfare agency imposes certain sanctions on certain families. The full text of the regulation at 24 CFR 5.615 is provided as Exhibit 6-5. The requirements are summarized below. This rule applies only if a family was a public housing resident at the time the sanction was imposed.

Covered Families

The families covered by 24 CFR 5.615 are those “who receive welfare assistance or other public assistance benefits (‘welfare benefits’) from a State or other public agency (‘welfare agency’) under a program for which Federal, State or local law requires that a member of the family must participate in an economic self-sufficiency program as a condition for such assistance” [24 CFR 5.615(b)]

Imputed Income

When a welfare agency imposes a sanction that reduces a family’s welfare income because the family commits fraud or fails to comply with the agency’s economic self-sufficiency program or work activities requirement, the PHA must include in annual income “imputed” welfare income. The PHA must request that the welfare agency provide the reason for the reduction of benefits and the amount of the reduction of benefits. The imputed welfare income is the amount that the benefits were reduced as a result of the sanction.

This requirement does not apply to reductions in welfare benefits: (1) at the expiration of the lifetime or other time limit on the payment of welfare benefits, (2) if a family member is unable to find employment even though the family member has complied with the welfare agency economic self-sufficiency or work activities requirements, or (3) because a family member has not complied with other welfare agency requirements [24 CFR 5.615(b)(2)].

For special procedures related to grievance hearings based upon the PHA’s denial of a family’s request to lower rent when the family experiences a welfare benefit reduction, see Chapter 14, Grievances and Appeals.

Offsets

The amount of the imputed welfare income is offset by the amount of additional income the family begins to receive after the sanction is imposed. When the additional income equals or exceeds the imputed welfare income, the imputed income is reduced to zero [24 CFR 5.615(c)(4)].

6-I.K. PERIODIC AND DETERMINABLE ALLOWANCES [24 CFR 5.609(b)(7)]

Annual income includes periodic and determinable allowances, such as alimony and child support payments, and regular contributions or gifts received from organizations or from persons not residing with a tenant family.

Alimony and Child Support

The PHA must count alimony or child support amounts awarded as part of a divorce or separation agreement.

PHA Policy

The PHA will count court-awarded amounts for alimony and child support unless the PHA verifies that (1) the payments are not being made and (2) the family has made reasonable efforts to collect amounts due, including filing with courts or agencies responsible for enforcing payments [HCV GB, pp. 5-23 and 5-47].

Families who do not have court-awarded alimony and child support awards are not required to seek a court award and are not required to take independent legal action to obtain collection.

Regular Contributions or Gifts

The PHA must count as income regular monetary and nonmonetary contributions or gifts from persons not residing with a tenant family [24 CFR 5.609(b)(7)]. Temporary, nonrecurring, or sporadic income and gifts are not counted [24 CFR 5.609(c)(9)].

PHA Policy

Examples of regular contributions include: (1) regular payment of a family's bills (e.g., utilities, telephone, rent, credit cards, and car payments), (2) cash or other liquid assets provided to any family member on a regular basis, and (3) "in-kind" contributions such as groceries and clothing provided to a family on a regular basis.

Nonmonetary contributions will be valued at the cost of purchasing the items, as determined by the PHA. For contributions that may vary from month to month (e.g., utility payments), the PHA will include an average amount based upon past history.